

Zebrafish Idb1a Antibody (C-term)
Purified Rabbit Polyclonal Antibody (Pab)
Catalog # Azb18695a**Specification**

Zebrafish Idb1a Antibody (C-term) - Product Information

Application	WB,E
Primary Accession	O73715
Reactivity	Zebrafish
Host	Rabbit
Clonality	Polyclonal
Isotype	Rabbit IgG
Antigen Region	336-368

Zebrafish Idb1a Antibody (C-term) - Additional Information**Gene ID** 30579**Other Names**

LIM domain-binding protein 1-A, LDB-1-A, LIM domain-binding protein 4, LDB-4, zLdb4, Idb1a, Idb4

Target/Specificity

This Zebrafish Idb1a antibody is generated from a rabbit immunized with a KLH conjugated synthetic peptide between 336-368 amino acids from the C-terminal region of zebrafish Idb1a.

Dilution

WB~~1:1000

E~~Use at an assay dependent concentration.

Format

Purified polyclonal antibody supplied in PBS with 0.09% (W/V) sodium azide. This antibody is purified through a protein A column, followed by peptide affinity purification.

Storage

Maintain refrigerated at 2-8°C for up to 2 weeks. For long term storage store at -20°C in small aliquots to prevent freeze-thaw cycles.

Precautions

Zebrafish Idb1a Antibody (C-term) is for research use only and not for use in diagnostic or therapeutic procedures.

Zebrafish Idb1a Antibody (C-term) - Protein Information**Name** Idb1a**Synonyms** Idb4**Function** Binds to the LIM domain of a wide variety of LIM domain- containing transcription

factors.

Cellular Location

Nucleus.

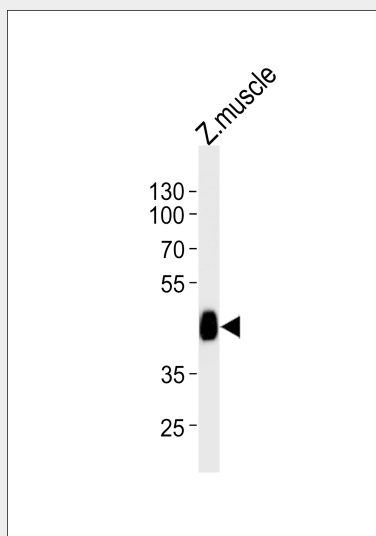
Tissue Location

Expressed ubiquitously in the embryo and adult.

Zebrafish Idb1a Antibody (C-term) - Protocols

Provided below are standard protocols that you may find useful for product applications.

- [Western Blot](#)
- [Blocking Peptides](#)
- [Dot Blot](#)
- [Immunohistochemistry](#)
- [Immunofluorescence](#)
- [Immunoprecipitation](#)
- [Flow Cytometry](#)
- [Cell Culture](#)

Zebrafish Idb1a Antibody (C-term) - Images

Western blot analysis of lysate from zebrafish muscle tissue lysate, using Zebrafish Idb1a Antibody (C-term) (Cat. #Azb18695a). Azb18695a was diluted at 1:1000. A goat anti-rabbit IgG H&L (HRP) at 1:5000 dilution was used as the secondary antibody. Lysate at 35ug.

Zebrafish Idb1a Antibody (C-term) - Background

Binds to the LIM domain of a wide variety of LIM domain- containing transcription factors.

Zebrafish Idb1a Antibody (C-term) - References

Toyama R.,et al.Mech. Dev. 71:197-200(1998).
Tran Y.H.,et al.J. Biochem. 140:105-119(2006).