

**Zebrafish ba2 Antibody (Center)**  
**Purified Rabbit Polyclonal Antibody (Pab)**  
**Catalog # Azb18700c****Specification**

---

**Zebrafish ba2 Antibody (Center) - Product Information**

|                   |                        |
|-------------------|------------------------|
| Application       | WB,E                   |
| Primary Accession | <a href="#">Q90485</a> |
| Reactivity        | Zebrafish              |
| Host              | Rabbit                 |
| Clonality         | Polyclonal             |
| Isotype           | Rabbit IgG             |
| Antigen Region    | 71-104                 |

**Zebrafish ba2 Antibody (Center) - Additional Information****Other Names**

Hemoglobin subunit beta-2, Beta-2-globin, Beta-A2-globin, Hemoglobin beta-2 chain, ba2

**Target/Specificity**

This Zebrafish ba2 antibody is generated from a rabbit immunized with a KLH conjugated synthetic peptide between 71-104 amino acids of zebrafish ba2.

**Dilution**

WB~~1:1000

E~~Use at an assay dependent concentration.

**Format**

Purified polyclonal antibody supplied in PBS with 0.09% (W/V) sodium azide. This antibody is purified through a protein A column, followed by peptide affinity purification.

**Storage**

Maintain refrigerated at 2-8°C for up to 2 weeks. For long term storage store at -20°C in small aliquots to prevent freeze-thaw cycles.

**Precautions**

Zebrafish ba2 Antibody (Center) is for research use only and not for use in diagnostic or therapeutic procedures.

**Zebrafish ba2 Antibody (Center) - Protein Information****Name** ba2

**Function** Involved in oxygen transport from gills to the various peripheral tissues.

**Tissue Location**

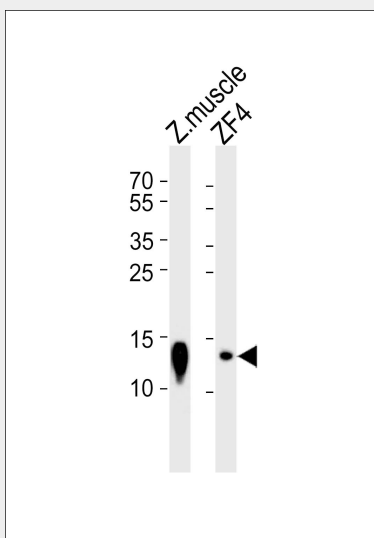
Red blood cells..

## **Zebrafish ba2 Antibody (Center) - Protocols**

Provided below are standard protocols that you may find useful for product applications.

- [Western Blot](#)
- [Blocking Peptides](#)
- [Dot Blot](#)
- [Immunohistochemistry](#)
- [Immunofluorescence](#)
- [Immunoprecipitation](#)
- [Flow Cytometry](#)
- [Cell Culture](#)

## **Zebrafish ba2 Antibody (Center) - Images**



Western blot analysis of lysates from zebrafish muscle tissue lysate and ZF4 cell line (from left to right), using Zebrafish ba2 Antibody (Center) (Cat. #Azb18700c). Azb18700c was diluted at 1:1000 at each lane. A goat anti-rabbit IgG H&L (HRP) at 1:5000 dilution was used as the secondary antibody. Lysates at 35ug per lane.

## **Zebrafish ba2 Antibody (Center) - Background**

Involved in oxygen transport from gills to the various peripheral tissues.

## **Zebrafish ba2 Antibody (Center) - References**

Chan F.-Y., et al. Blood 89:688-700(1997).  
Howe K., et al. Nature 496:498-503(2013).