

**(DANRE) ada Antibody (Center)**  
**Purified Rabbit Polyclonal Antibody (Pab)**  
**Catalog # Azb18702c**

**Specification**

---

**(DANRE) ada Antibody (Center) - Product Information**

|                   |                        |
|-------------------|------------------------|
| Application       | WB,E                   |
| Primary Accession | <a href="#">Q6DG22</a> |
| Reactivity        | Zebrafish              |
| Host              | Rabbit                 |
| Clonality         | Polyclonal             |
| Isotype           | Rabbit IgG             |
| Antigen Region    | 114-148                |

**(DANRE) ada Antibody (Center) - Additional Information**

**Gene ID** 436919

**Other Names**

Adenosine deaminase, Adenosine aminohydrolase, ada

**Target/Specificity**

This (DANRE) ada antibody is generated from a rabbit immunized with a KLH conjugated synthetic peptide between 114-148 amino acids of DANRE ADA.

**Dilution**

WB~~1:1000

E~~Use at an assay dependent concentration.

**Format**

Purified polyclonal antibody supplied in PBS with 0.09% (W/V) sodium azide. This antibody is purified through a protein A column, followed by peptide affinity purification.

**Storage**

Maintain refrigerated at 2-8°C for up to 2 weeks. For long term storage store at -20°C in small aliquots to prevent freeze-thaw cycles.

**Precautions**

(DANRE) ada Antibody (Center) is for research use only and not for use in diagnostic or therapeutic procedures.

**(DANRE) ada Antibody (Center) - Protein Information**

**Name** ada

**Function** Catalyzes the hydrolytic deamination of adenosine and 2- deoxyadenosine. Plays an important role in purine metabolism and in adenosine homeostasis. Modulates signaling by extracellular adenosine, and so contributes indirectly to cellular signaling events. May act as a

positive regulator of T-cell coactivation (By similarity).

#### Cellular Location

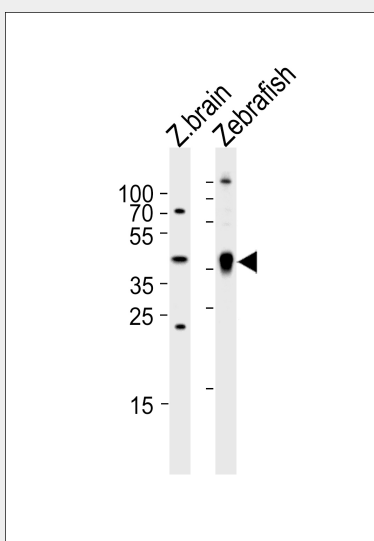
Cell membrane {ECO:0000250|UniProtKB:P00813}; Peripheral membrane protein; Extracellular side. Cell junction {ECO:0000250|UniProtKB:P00813} Cytoplasmic vesicle lumen {ECO:0000250|UniProtKB:P03958}. Cytoplasm. Lysosome {ECO:0000250|UniProtKB:P00813}

#### (DANRE) ada Antibody (Center) - Protocols

Provided below are standard protocols that you may find useful for product applications.

- [Western Blot](#)
- [Blocking Peptides](#)
- [Dot Blot](#)
- [Immunohistochemistry](#)
- [Immunofluorescence](#)
- [Immunoprecipitation](#)
- [Flow Cytometry](#)
- [Cell Culture](#)

#### (DANRE) ada Antibody (Center) - Images



Western blot analysis of lysates from zebra fish brain and Zebrafish tissue lysate (from left to right), using (DANRE) ada Antibody (Center)(Cat. #Azb18702c). Azb18702c was diluted at 1:1000 at each lane. A goat anti-rabbit IgG H&L(HRP) at 1:5000 dilution was used as the secondary antibody. Lysates at 35ug per lane.

#### (DANRE) ada Antibody (Center) - Background

Catalyzes the hydrolytic deamination of adenosine and 2- deoxyadenosine. Plays an important role in purine metabolism and in adenosine homeostasis. Modulates signaling by extracellular adenosine, and so contributes indirectly to cellular signaling events. May act as a positive regulator of T-cell coactivation (By similarity).