

Zebrafish pkn2 Antibody (N-term)
Purified Rabbit Polyclonal Antibody (Pab)
Catalog # Azb18708a**Specification**

Zebrafish pkn2 Antibody (N-term) - Product Information

Application	WB,E
Primary Accession	A7MBL8
Reactivity	Zebrafish
Host	Rabbit
Clonality	Polyclonal
Isotype	Rabbit IgG
Antigen Region	108-141

Zebrafish pkn2 Antibody (N-term) - Additional Information**Gene ID** 567134**Other Names**

Serine/threonine-protein kinase N2, PKN gamma, Protein kinase C-like 2, Protein-kinase C-related kinase 2, pkn2, prk2, prkcl2

Target/Specificity

This Zebrafish pkn2 antibody is generated from a rabbit immunized with a KLH conjugated synthetic peptide between 108-141 amino acids of zebrafish pkn2.

Dilution

WB~~1:1000

E~~Use at an assay dependent concentration.

Format

Purified polyclonal antibody supplied in PBS with 0.09% (W/V) sodium azide. This antibody is purified through a protein A column, followed by peptide affinity purification.

Storage

Maintain refrigerated at 2-8°C for up to 2 weeks. For long term storage store at -20°C in small aliquots to prevent freeze-thaw cycles.

Precautions

Zebrafish pkn2 Antibody (N-term) is for research use only and not for use in diagnostic or therapeutic procedures.

Zebrafish pkn2 Antibody (N-term) - Protein Information**Name** pkn2**Synonyms** prk2, prkcl2

Function Pkc-related serine/threonine-protein kinase and Rho/Rac effector protein that participates in specific signal transduction responses in the cell. May play a role in the regulation of cell cycle progression, actin cytoskeleton assembly, cell migration, cell adhesion and transcription activation signaling processes (By similarity).

Cellular Location

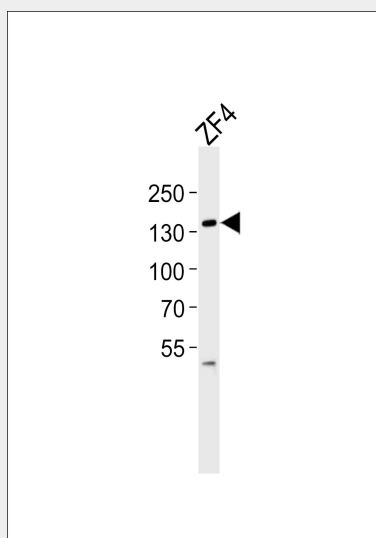
Cytoplasm. Nucleus. Membrane. Cell projection, lamellipodium Cytoplasm, cytoskeleton. Cleavage furrow Midbody. Cell junction

Zebrafish pkn2 Antibody (N-term) - Protocols

Provided below are standard protocols that you may find useful for product applications.

- [Western Blot](#)
- [Blocking Peptides](#)
- [Dot Blot](#)
- [Immunohistochemistry](#)
- [Immunofluorescence](#)
- [Immunoprecipitation](#)
- [Flow Cytometry](#)
- [Cell Culture](#)

Zebrafish pkn2 Antibody (N-term) - Images



Western blot analysis of lysate from ZF4 cell line, using Zebrafish pkn2 Antibody (N-term) (Cat. #Azb18708a). Azb18708a was diluted at 1:1000. A goat anti-rabbit IgG H&L (HRP) at 1:5000 dilution was used as the secondary antibody. Lysate at 35ug.

Zebrafish pkn2 Antibody (N-term) - Background

Pkc-related serine/threonine-protein kinase and Rho/Rac effector protein that participates in specific signal transduction responses in the cell. May play a role in the regulation of cell cycle progression, actin cytoskeleton assembly, cell migration, cell adhesion and transcription activation signaling processes (By similarity).