

Zebrafish chst1 Antibody (C-term)
Purified Rabbit Polyclonal Antibody (Pab)
Catalog # Azb18710c

Specification

Zebrafish chst1 Antibody (C-term) - Product Information

Application	WB,E
Primary Accession	Q6DBY9
Reactivity	Zebrafish
Host	Rabbit
Clonality	Polyclonal
Isotype	Rabbit IgG
Antigen Region	341-375

Zebrafish chst1 Antibody (C-term) - Additional Information

Gene ID 445124

Other Names

Carbohydrate sulfotransferase 1, Keratan sulfate Gal-6 sulfotransferase, KS6ST, KSGal6ST, KSST, chst1

Target/Specificity

This Zebrafish chst1 antibody is generated from a rabbit immunized with a KLH conjugated synthetic peptide between 341-375 amino acids of zebrafish chst1.

Dilution

WB~~1:1000

E~~Use at an assay dependent concentration.

Format

Purified polyclonal antibody supplied in PBS with 0.09% (W/V) sodium azide. This antibody is purified through a protein A column, followed by peptide affinity purification.

Storage

Maintain refrigerated at 2-8°C for up to 2 weeks. For long term storage store at -20°C in small aliquots to prevent freeze-thaw cycles.

Precautions

Zebrafish chst1 Antibody (C-term) is for research use only and not for use in diagnostic or therapeutic procedures.

Zebrafish chst1 Antibody (C-term) - Protein Information

Name chst1

Function Sulfotransferase that utilizes 3'-phospho-5'-adenylyl sulfate (PAPS) as sulfonate donor to catalyze the transfer of sulfate to position 6 of galactose (Gal) residues of keratan.

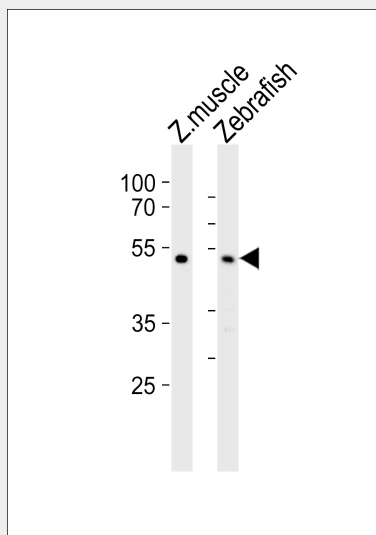
Cellular Location

Golgi apparatus membrane; Single-pass type II membrane protein

Zebrafish chst1 Antibody (C-term) - Protocols

Provided below are standard protocols that you may find useful for product applications.

- [Western Blot](#)
- [Blocking Peptides](#)
- [Dot Blot](#)
- [Immunohistochemistry](#)
- [Immunofluorescence](#)
- [Immunoprecipitation](#)
- [Flow Cytometry](#)
- [Cell Culture](#)

Zebrafish chst1 Antibody (C-term) - Images

Western blot analysis of lysates from zebrafish muscle, zebrafish tissue lysate (from left to right), using Zebrafish chst1 Antibody (C-term) (Cat. #Azb18710c). Azb18710c was diluted at 1:1000 at each lane. A goat anti-rabbit IgG H&L (HRP) at 1:5000 dilution was used as the secondary antibody. Lysates at 35ug per lane.

Zebrafish chst1 Antibody (C-term) - Background

Sulfotransferase that utilizes 3'-phospho-5'-adenylyl sulfate (PAPS) as sulfonate donor to catalyze the transfer of sulfate to position 6 of galactose (Gal) residues of keratan (By similarity).