

Zebrafish znf148 Antibody (Center)
Purified Rabbit Polyclonal Antibody (Pab)
Catalog # Azb18713c**Specification**

Zebrafish znf148 Antibody (Center) - Product Information

Application	WB,E
Primary Accession	A0MS83
Reactivity	Zebrafish
Host	Rabbit
Clonality	Polyclonal
Isotype	Rabbit IgG
Antigen Region	287-320

Zebrafish znf148 Antibody (Center) - Additional Information**Gene ID** 560300**Other Names**

Zinc finger protein 148, Transcription factor ZBP-89, Zinc finger DNA-binding protein 89, znf148, zbp89

Target/Specificity

This Zebrafish znf148 antibody is generated from a rabbit immunized with a KLH conjugated synthetic peptide between 287-320 amino acids of zebrafish znf148.

Dilution

WB~~1:1000

E~~Use at an assay dependent concentration.

Format

Purified polyclonal antibody supplied in PBS with 0.09% (W/V) sodium azide. This antibody is purified through a protein A column, followed by peptide affinity purification.

Storage

Maintain refrigerated at 2-8°C for up to 2 weeks. For long term storage store at -20°C in small aliquots to prevent freeze-thaw cycles.

Precautions

Zebrafish znf148 Antibody (Center) is for research use only and not for use in diagnostic or therapeutic procedures.

Zebrafish znf148 Antibody (Center) - Protein Information**Name** znf148**Synonyms** zbp89

Function Involved in transcriptional regulation. Represses the transcription of a number of genes. Required for primitive and definitive hematopoiesis during embryonic development.

Cellular Location

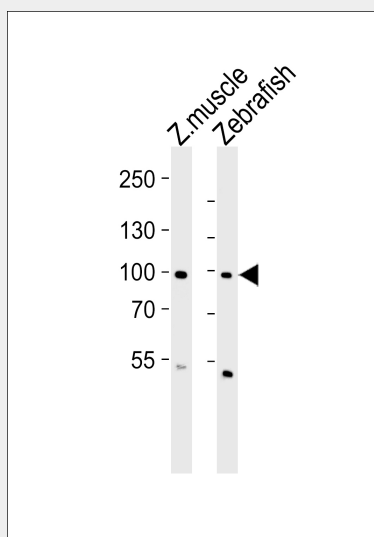
Nucleus.

Zebrafish znf148 Antibody (Center) - Protocols

Provided below are standard protocols that you may find useful for product applications.

- [Western Blot](#)
- [Blocking Peptides](#)
- [Dot Blot](#)
- [Immunohistochemistry](#)
- [Immunofluorescence](#)
- [Immunoprecipitation](#)
- [Flow Cytometry](#)
- [Cell Culture](#)

Zebrafish znf148 Antibody (Center) - Images



Western blot analysis of lysates from zebrafish muscle, zebrafish tissue lysate (from left to right), using Zebrafish znf148 Antibody (Center) (Cat. #Azb18713c). Azb18713c was diluted at 1:1000 at each lane. A goat anti-rabbit IgG H&L (HRP) at 1:5000 dilution was used as the secondary antibody. Lysates at 35ug per lane.

Zebrafish znf148 Antibody (Center) - Background

Involved in transcriptional regulation. Represses the transcription of a number of genes. Required for primitive and definitive hematopoiesis during embryonic development.

Zebrafish znf148 Antibody (Center) - References

Li X.,et al.Development 133:3641-3650(2006).
Howe K.,et al.Nature 496:498-503(2013).