

Zebrafish edc3 Antibody (Center)
Purified Rabbit Polyclonal Antibody (Pab)
Catalog # Azb18719a**Specification**

Zebrafish edc3 Antibody (Center) - Product Information

Application	WB,E
Primary Accession	Q502M5
Reactivity	Zebrafish
Host	Rabbit
Clonality	Polyclonal
Isotype	Rabbit IgG
Antigen Region	162-197

Zebrafish edc3 Antibody (Center) - Additional Information**Other Names**

Enhancer of mRNA-decapping protein 3, LSM16 protein homolog, YjeF domain-containing protein 1, edc3, lsm16, yjdc

Target/Specificity

This Zebrafish edc3 antibody is generated from a rabbit immunized with a KLH conjugated synthetic peptide between 162-197 amino acids from the central region of zebrafish edc3.

Dilution

WB~~1:1000

E~~Use at an assay dependent concentration.

Format

Purified polyclonal antibody supplied in PBS with 0.09% (W/V) sodium azide. This antibody is purified through a protein A column, followed by peptide affinity purification.

Storage

Maintain refrigerated at 2-8°C for up to 2 weeks. For long term storage store at -20°C in small aliquots to prevent freeze-thaw cycles.

Precautions

Zebrafish edc3 Antibody (Center) is for research use only and not for use in diagnostic or therapeutic procedures.

Zebrafish edc3 Antibody (Center) - Protein Information

Name edc3

Synonyms lsm16, yjdc

Function Binds single-stranded RNA. Involved in the process of mRNA degradation and in the positive regulation of mRNA decapping (By similarity).

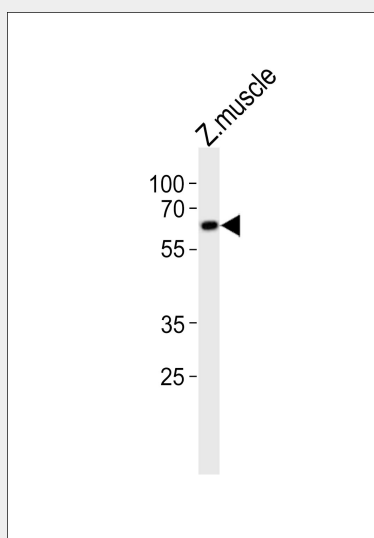
Cellular Location

Cytoplasm, P-body. Note=Processing bodies (PB).

Zebrafish edc3 Antibody (Center) - Protocols

Provided below are standard protocols that you may find useful for product applications.

- [Western Blot](#)
- [Blocking Peptides](#)
- [Dot Blot](#)
- [Immunohistochemistry](#)
- [Immunofluorescence](#)
- [Immunoprecipitation](#)
- [Flow Cytometry](#)
- [Cell Culture](#)

Zebrafish edc3 Antibody (Center) - Images

Western blot analysis of lysate from zebrafish muscle tissue lysate, using Zebrafish edc3 Antibody (Center) (Cat. #Azb18719a). Azb18719a was diluted at 1:1000. A goat anti-rabbit IgG H&L (HRP) at 1:10000 dilution was used as the secondary antibody. Lysate at 20ug.

Zebrafish edc3 Antibody (Center) - Background

Binds single-stranded RNA. In the process of mRNA degradation, may play a role in mRNA decapping (By similarity).

Zebrafish edc3 Antibody (Center) - References

Lemeer S., et al. J. Proteome Res. 7:1555-1564(2008).