

Zebrafish ric8b Antibody (C-term)
Purified Rabbit Polyclonal Antibody (Pab)
Catalog # Azb21572b**Specification**

Zebrafish ric8b Antibody (C-term) - Product Information

Application	WB,E
Primary Accession	Q6DRJ9
Reactivity	Zebrafish
Host	Rabbit
Clonality	polyclonal
Isotype	Rabbit IgG
Antigen Region	444-478

Zebrafish ric8b Antibody (C-term) - Additional Information**Gene ID** 334503**Other Names**

Synembryn-B, Protein Ric-8B, Synembryn-like, ric8b, synbl

Target/Specificity

This Zebrafish ric8b antibody is generated from a rabbit immunized with a KLH conjugated synthetic peptide between 444-478 amino acids from the C-terminal region of zebrafish ric8b.

Dilution

WB~~1:2000

E~~Use at an assay dependent concentration.

Format

Purified polyclonal antibody supplied in PBS with 0.09% (W/V) sodium azide. This antibody is purified through a protein A column, followed by peptide affinity purification.

Storage

Maintain refrigerated at 2-8°C for up to 2 weeks. For long term storage store at -20°C in small aliquots to prevent freeze-thaw cycles.

Precautions

Zebrafish ric8b Antibody (C-term) is for research use only and not for use in diagnostic or therapeutic procedures.

Zebrafish ric8b Antibody (C-term) - Protein Information**Name** ric8b**Synonyms** synbl {ECO:0000303|PubMed:15256591}**Function** Chaperone that specifically binds and folds nascent G(s) G- alpha proteins (GNAS and

GNAL) prior to G protein heterotrimer formation, promoting their association with the plasma membrane. Also acts as a guanine nucleotide exchange factor (GEF) for G(s) proteins by stimulating exchange of bound GDP for free GTP. Acts as an important component for odorant signal transduction by mediating GNAL (G(olf)- alpha) folding, thereby promoting-dependent cAMP accumulation in olfactory sensory neurons.

Cellular Location

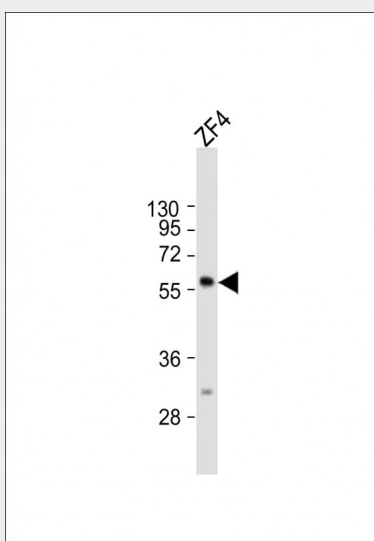
Cytoplasm, cell cortex {ECO:0000250|UniProtKB:Q80XE1}. Note=Localizes to the cell cortex {ECO:0000250|UniProtKB:Q80XE1}

Zebrafish ric8b Antibody (C-term) - Protocols

Provided below are standard protocols that you may find useful for product applications.

- [Western Blot](#)
- [Blocking Peptides](#)
- [Dot Blot](#)
- [Immunohistochemistry](#)
- [Immunofluorescence](#)
- [Immunoprecipitation](#)
- [Flow Cytometry](#)
- [Cell Culture](#)

Zebrafish ric8b Antibody (C-term) - Images



Anti-ric8b Antibody (C-term) at 1:2000 dilution + ZF4 whole cell lysate ZF4 lysates/proteins at 20 µg per lane. Secondary Goat Anti-Rabbit IgG, (H+L), Peroxidase conjugated at 1/10000 dilution. Predicted band size : 60 kDa Blocking/Dilution buffer: 5% NFDm/TBST.

Zebrafish ric8b Antibody (C-term) - Background

Guanine nucleotide exchange factor (GEF), which can activate some, but not all, G-alpha proteins by exchanging bound GDP for free GTP.

Zebrafish ric8b Antibody (C-term) - References

Amsterdam A., et al. Proc. Natl. Acad. Sci. U.S.A. 101:12792-12797(2004).

