

NR1I3 Antibody (Center)
Affinity Purified Rabbit Polyclonal Antibody (Pab)
Catalog # AP14587c**Specification**

NR1I3 Antibody (Center) - Product Information

Application	WB,E
Primary Accession	Q14994
Other Accession	NP_005113.1 , NP_001070948.1
Reactivity	Human
Host	Rabbit
Clonality	Polyclonal
Isotype	Rabbit IgG
Calculated MW	39942
Antigen Region	155-183

NR1I3 Antibody (Center) - Additional Information**Gene ID** 9970**Other Names**

Nuclear receptor subfamily 1 group I member 3, Constitutive activator of retinoid response, Constitutive active response, Constitutive androstane receptor, CAR, Orphan nuclear receptor MB67, NR1I3, CAR

Target/Specificity

This NR1I3 antibody is generated from rabbits immunized with a KLH conjugated synthetic peptide between 155-183 amino acids from the Central region of human NR1I3.

Dilution

WB~~1:1000

E~~Use at an assay dependent concentration.

Format

Purified polyclonal antibody supplied in PBS with 0.09% (W/V) sodium azide. This antibody is purified through a protein A column, followed by peptide affinity purification.

Storage

Maintain refrigerated at 2-8°C for up to 2 weeks. For long term storage store at -20°C in small aliquots to prevent freeze-thaw cycles.

Precautions

NR1I3 Antibody (Center) is for research use only and not for use in diagnostic or therapeutic procedures.

NR1I3 Antibody (Center) - Protein Information**Name** NR1I3

Synonyms CAR

Function Binds and transactivates the retinoic acid response elements that control expression of the retinoic acid receptor beta 2 and alcohol dehydrogenase 3 genes. Transactivates both the phenobarbital responsive element module of the human CYP2B6 gene and the CYP3A4 xenobiotic response element.

Cellular Location

Nucleus. Cytoplasm. Cytoplasm, cytoskeleton. Note=Recruited to the cytoplasm by DNAJC7.

Tissue Location

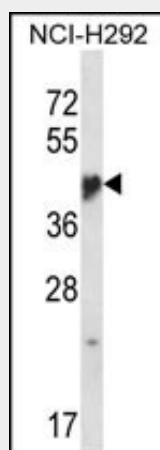
Predominantly expressed in liver.

NR1I3 Antibody (Center) - Protocols

Provided below are standard protocols that you may find useful for product applications.

- [Western Blot](#)
- [Blocking Peptides](#)
- [Dot Blot](#)
- [Immunohistochemistry](#)
- [Immunofluorescence](#)
- [Immunoprecipitation](#)
- [Flow Cytometry](#)
- [Cell Culture](#)

NR1I3 Antibody (Center) - Images



NR1I3 Antibody (Center) (Cat. #AP14587c) western blot analysis in NCI-H292 cell line lysates (35ug/lane). This demonstrates the NR1I3 antibody detected the NR1I3 protein (arrow).

NR1I3 Antibody (Center) - Background

This gene encodes a member of the nuclear receptor superfamily, and is a key regulator of xenobiotic and endobiotic metabolism. The protein binds to DNA as a monomer or a heterodimer with the retinoid X receptor and regulates the transcription of target genes involved in drug metabolism and bilirubin clearance, such as cytochrome P450 family members. Unlike most nuclear receptors, this transcriptional regulator is constitutively active

in the absence of ligand but is regulated by both agonists and inverse agonists. Ligand binding results in translocation of this protein to the nucleus, where it activates or represses target gene transcription. These ligands include bilirubin, a variety of foreign compounds, steroid hormones, and prescription drugs. Multiple transcript variants encoding different isoforms have been found for this gene.

NR1I3 Antibody (Center) - References

Benet, M., et al. J. Biol. Chem. 285(37):28457-28471(2010)
Oliver, P., et al. Clin. Chem. Lab. Med. 48(5):635-639(2010)
Masuyama, H., et al. Mol. Endocrinol. 24(4):745-753(2010)
Mutoh, S., et al. J. Biol. Chem. 284(50):34785-34792(2009)
Urano, T., et al. Geriatr Gerontol Int 9(3):235-241(2009)