

**NDUFS3 Antibody (C-term)**  
**Purified Rabbit Polyclonal Antibody (Pab)**  
**Catalog # AP20739c****Specification**

---

**NDUFS3 Antibody (C-term) - Product Information**

Application	WB,E
Primary Accession	<a href="#">O75489</a>
Reactivity	Human, Mouse
Host	Rabbit
Clonality	Polyclonal
Isotype	Rabbit IgG
Calculated MW	30242

**NDUFS3 Antibody (C-term) - Additional Information****Gene ID** 4722**Other Names**

NADH dehydrogenase [ubiquinone] iron-sulfur protein 3, mitochondrial, Complex I-30kD, CI-30kD, NADH-ubiquinone oxidoreductase 30 kDa subunit, NDUFS3

**Target/Specificity**

This NDUFS3 antibody is generated from a rabbit immunized with a KLH conjugated synthetic peptide between 251-284 amino acids from the C-terminal region of human NDUFS3.

**Dilution**

WB~~1:1000

E~~Use at an assay dependent concentration.

**Format**

Purified polyclonal antibody supplied in PBS with 0.09% (W/V) sodium azide. This antibody is purified through a protein A column, followed by peptide affinity purification.

**Storage**

Maintain refrigerated at 2-8°C for up to 2 weeks. For long term storage store at -20°C in small aliquots to prevent freeze-thaw cycles.

**Precautions**

NDUFS3 Antibody (C-term) is for research use only and not for use in diagnostic or therapeutic procedures.

**NDUFS3 Antibody (C-term) - Protein Information****Name** NDUFS3

**Function** Core subunit of the mitochondrial membrane respiratory chain NADH dehydrogenase (Complex I) which catalyzes electron transfer from NADH through the respiratory chain, using

ubiquinone as an electron acceptor (PubMed:[14729820](#), PubMed:[30140060](#)). Essential for the catalytic activity and assembly of complex I (PubMed:[14729820](#), PubMed:[24028823](#), PubMed:[30140060](#)).

#### Cellular Location

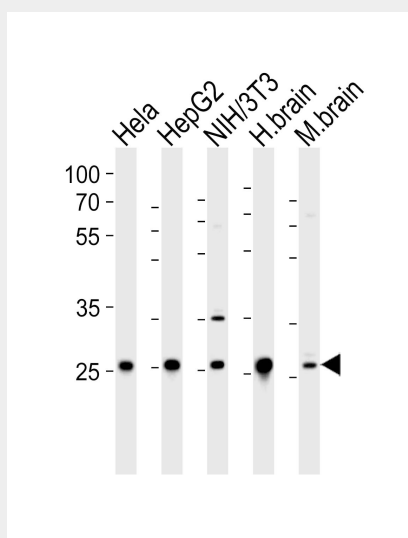
Mitochondrion inner membrane; Peripheral membrane protein; Matrix side

#### NDUFS3 Antibody (C-term) - Protocols

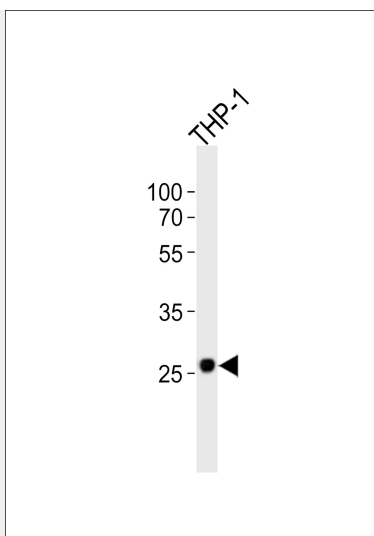
Provided below are standard protocols that you may find useful for product applications.

- [Western Blot](#)
- [Blocking Peptides](#)
- [Dot Blot](#)
- [Immunohistochemistry](#)
- [Immunofluorescence](#)
- [Immunoprecipitation](#)
- [Flow Cytometry](#)
- [Cell Culture](#)

#### NDUFS3 Antibody (C-term) - Images



Western blot analysis of lysates from HeLa, HepG2, mouse NIH/3T3 cell line, human brain and mouse brain tissue lysate (from left to right), using NDUFS3 Antibody (C-term) (Cat. #AP20739c). AP20739c was diluted at 1:1000 at each lane. A goat anti-rabbit IgG H&L (HRP) at 1:5000 dilution was used as the secondary antibody. Lysates at 35 µg per lane.



Western blot analysis of lysate from THP-1 cell line, using NDUFS3 Antibody (C-term)(Cat. #AP20739c). AP20739c was diluted at 1:1000. A goat anti-rabbit IgG H&L(HRP) at 1:10000 dilution was used as the secondary antibody. Lysate at 20ug.

#### **NDUFS3 Antibody (C-term) - Background**

Core subunit of the mitochondrial membrane respiratory chain NADH dehydrogenase (Complex I) that is believed to belong to the minimal assembly required for catalysis. Complex I functions in the transfer of electrons from NADH to the respiratory chain. The immediate electron acceptor for the enzyme is believed to be ubiquinone (By similarity).

#### **NDUFS3 Antibody (C-term) - References**

Loeffen J.,et al.Biochem. Biophys. Res. Commun. 247:751-758(1998).  
Procaccio V.,et al.Mamm. Genome 11:808-810(2000).  
Hu R.-M.,et al.Proc. Natl. Acad. Sci. U.S.A. 97:9543-9548(2000).  
Ota T.,et al.Nat. Genet. 36:40-45(2004).  
Mural R.J.,et al.Submitted (SEP-2005) to the EMBL/GenBank/DDBJ databases.