

C12orf48 Antibody (C-term)
Affinity Purified Rabbit Polyclonal Antibody (Pab)
Catalog # AP10083b**Specification**

C12orf48 Antibody (C-term) - Product Information

Application	WB, IHC-P, FC,E
Primary Accession	O9NWS1
Other Accession	NP_060385.3
Reactivity	Human
Host	Rabbit
Clonality	Polyclonal
Isotype	Rabbit IgG
Calculated MW	65054
Antigen Region	522-550

C12orf48 Antibody (C-term) - Additional Information**Gene ID** 55010**Other Names**

PCNA-interacting partner, PARI, PARP-1 binding protein, PARP1-binding protein, PARPBP, PARPBP, C12orf48, PARI

Target/Specificity

This C12orf48 antibody is generated from rabbits immunized with a KLH conjugated synthetic peptide between 522-550 amino acids from the C-terminal region of human C12orf48.

DilutionWB~~1:1000
IHC-P~~1:50~100
FC~~1:10~50**Format**

Purified polyclonal antibody supplied in PBS with 0.09% (W/V) sodium azide. This antibody is purified through a protein A column, followed by peptide affinity purification.

Storage

Maintain refrigerated at 2-8°C for up to 2 weeks. For long term storage store at -20°C in small aliquots to prevent freeze-thaw cycles.

Precautions

C12orf48 Antibody (C-term) is for research use only and not for use in diagnostic or therapeutic procedures.

C12orf48 Antibody (C-term) - Protein Information**Name** PARPBP

Synonyms C12orf48, PARI

Function Required to suppress inappropriate homologous recombination, thereby playing a central role DNA repair and in the maintenance of genomic stability. Antagonizes homologous recombination by interfering with the formation of the RAD51-DNA homologous recombination structure. Binds single-strand DNA and poly(A) homopolymers. Positively regulate the poly(ADP-ribosyl)ation activity of PARP1; however such function may be indirect.

Cellular Location

Cytoplasm. Nucleus Note=Localizes to chromatin in response to S phase arrest but not in mitosis. Targeted to chromatin via its interaction with PCNA

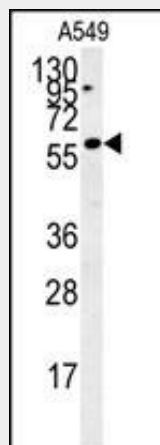
Tissue Location

Restricted to testis. Overexpressed in multiple cancer cells.

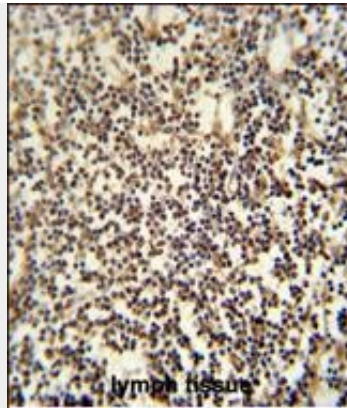
C12orf48 Antibody (C-term) - Protocols

Provided below are standard protocols that you may find useful for product applications.

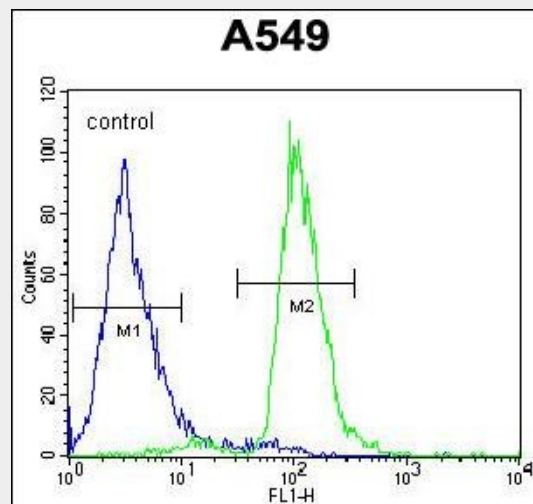
- [Western Blot](#)
- [Blocking Peptides](#)
- [Dot Blot](#)
- [Immunohistochemistry](#)
- [Immunofluorescence](#)
- [Immunoprecipitation](#)
- [Flow Cytometry](#)
- [Cell Culture](#)

C12orf48 Antibody (C-term) - Images

C12orf48 Antibody (C-term) (Cat. #AP10083b) western blot analysis in A549 cell line lysates (35ug/lane). This demonstrates the C12orf48 antibody detected the FBXO34 protein (arrow).



C12orf48 antibody (C-term) (Cat. #AP10083b) immunohistochemistry analysis in formalin fixed and paraffin embedded human lymph tissue followed by peroxidase conjugation of the secondary antibody and DAB staining. This data demonstrates the use of the C12orf48 antibody (C-term) for immunohistochemistry. Clinical relevance has not been evaluated.



C12orf48 Antibody (C-term) (Cat. #AP10083b) flow cytometric analysis of A549 cells (right histogram) compared to a negative control cell (left histogram). FITC-conjugated goat-anti-rabbit secondary antibodies were used for the analysis.

C12orf48 Antibody (C-term) - Citations

- [PARI functions as a new transcriptional target of FOXM1 involved in gastric cancer development.](#)