

**C1orf51 Antibody (N-term)**  
**Affinity Purified Rabbit Polyclonal Antibody (Pab)**  
**Catalog # AP10380a****Specification**

---

**C1orf51 Antibody (N-term) - Product Information**

Application	WB, IHC-P, FC,E
Primary Accession	<a href="#">Q8N365</a>
Other Accession	<a href="#">NP_653298.1</a>
Reactivity	Human
Host	Rabbit
Clonality	Polyclonal
Isotype	Rabbit IgG
Calculated MW	41443
Antigen Region	18-47

**C1orf51 Antibody (N-term) - Additional Information****Gene ID** 148523**Other Names**

Circadian-associated transcriptional repressor, ChIP-derived repressor of network oscillator, Chrono, Computationally highlighted repressor of the network oscillator, CIART, C1orf51

**Target/Specificity**

This C1orf51 antibody is generated from rabbits immunized with a KLH conjugated synthetic peptide between 18-47 amino acids from the N-terminal region of human C1orf51.

**Dilution**

WB~~1:1000  
IHC-P~~1:50~100  
FC~~1:10~50

**Format**

Purified polyclonal antibody supplied in PBS with 0.09% (W/V) sodium azide. This antibody is purified through a protein A column, followed by peptide affinity purification.

**Storage**

Maintain refrigerated at 2-8°C for up to 2 weeks. For long term storage store at -20°C in small aliquots to prevent freeze-thaw cycles.

**Precautions**

C1orf51 Antibody (N-term) is for research use only and not for use in diagnostic or therapeutic procedures.

**C1orf51 Antibody (N-term) - Protein Information****Name** CIART

**Synonyms** C1orf51

**Function** Transcriptional repressor which forms a negative regulatory component of the circadian clock and acts independently of the circadian transcriptional repressors: CRY1, CRY2 and BHLHE41. In a histone deacetylase-dependent manner represses the transcriptional activator activity of the CLOCK-BMAL1 heterodimer. Abrogates the interaction of BMAL1 with the transcriptional coactivator CREBBP and can repress the histone acetyl-transferase activity of the CLOCK-BMAL1 heterodimer, reducing histone acetylation of its target genes. Rhythmically binds the E-box elements (5'-CACGTG-3') on circadian gene promoters and its occupancy shows circadian oscillation antiphasic to BMAL1. Interacts with the glucocorticoid receptor (NR3C1) and contributes to the repressive function in the glucocorticoid response (By similarity).

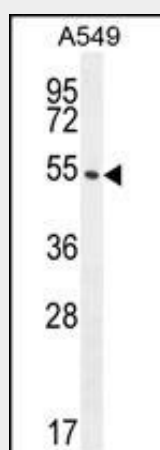
**Cellular Location**

Nucleus, PML body. Note=Co-localizes with the CLOCK-BMAL1 heterodimer in the PML body.

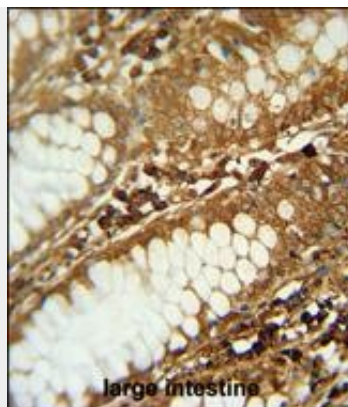
**C1orf51 Antibody (N-term) - Protocols**

Provided below are standard protocols that you may find useful for product applications.

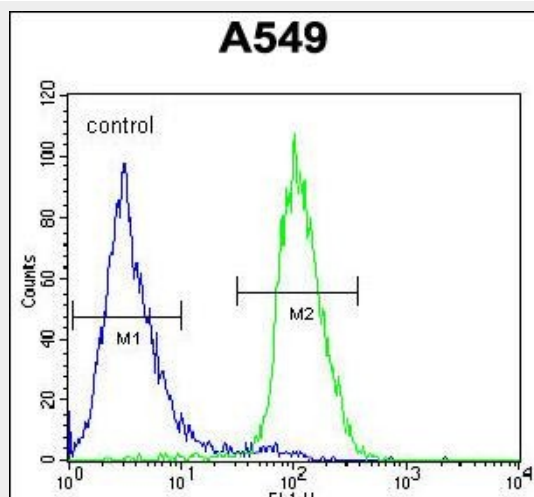
- [Western Blot](#)
- [Blocking Peptides](#)
- [Dot Blot](#)
- [Immunohistochemistry](#)
- [Immunofluorescence](#)
- [Immunoprecipitation](#)
- [Flow Cytometry](#)
- [Cell Culture](#)

**C1orf51 Antibody (N-term) - Images**

C1orf51 Antibody (N-term) (Cat. #AP10380a) western blot analysis in A549 cell line lysates (35ug/lane). This demonstrates the C1orf51 antibody detected the C1orf51 protein (arrow).



C1orf51 antibody (N-term) (Cat. #AP10380a) immunohistochemistry analysis in formalin fixed and paraffin embedded human large intestine followed by peroxidase conjugation of the secondary antibody and DAB staining. This data demonstrates the use of the C1orf51 antibody (N-term) for immunohistochemistry. Clinical relevance has not been evaluated.



C1orf51 Antibody (N-term) (Cat. #AP10380a) flow cytometric analysis of A549 cells (right histogram) compared to a negative control cell (left histogram). FITC-conjugated goat-anti-rabbit secondary antibodies were used for the analysis.

#### **C1orf51 Antibody (N-term) - References**

Lamesch, P., et al. Genomics 89(3):307-315(2007)