

hCG_2024410 Antibody (C-term)
Affinity Purified Rabbit Polyclonal Antibody (Pab)
Catalog # AP11040b**Specification**

hCG_2024410 Antibody (C-term) - Product Information

Application	WB, FC,E
Primary Accession	Q2OD12
Other Accession	Q96AT9
Reactivity	Human, Mouse
Host	Rabbit
Clonality	Polyclonal
Isotype	Rabbit IgG
Calculated MW	25023
Antigen Region	187-215

hCG_2024410 Antibody (C-term) - Additional Information**Gene ID** 729020**Other Names**

Ribulose-phosphate 3-epimerase-like protein 1, Ribulose-5-phosphate-3-epimerase-like protein 1, RPEL1

Target/Specificity

This hCG_2024410 antibody is generated from rabbits immunized with a KLH conjugated synthetic peptide between 187-215 amino acids from the C-terminal region of human hCG_2024410.

DilutionWB~~1:1000
FC~~1:10~50**Format**

Purified polyclonal antibody supplied in PBS with 0.09% (W/V) sodium azide. This antibody is purified through a protein A column, followed by peptide affinity purification.

Storage

Maintain refrigerated at 2-8°C for up to 2 weeks. For long term storage store at -20°C in small aliquots to prevent freeze-thaw cycles.

Precautions

hCG_2024410 Antibody (C-term) is for research use only and not for use in diagnostic or therapeutic procedures.

hCG_2024410 Antibody (C-term) - Protein Information**Name** RPEL1

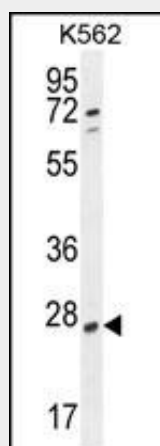
Function Catalyzes the reversible epimerization of D-ribulose 5- phosphate to D-xylulose 5-phosphate.

hCG_2024410 Antibody (C-term) - Protocols

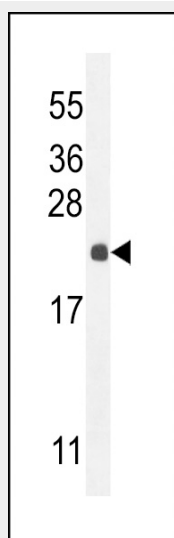
Provided below are standard protocols that you may find useful for product applications.

- [Western Blot](#)
- [Blocking Peptides](#)
- [Dot Blot](#)
- [Immunohistochemistry](#)
- [Immunofluorescence](#)
- [Immunoprecipitation](#)
- [Flow Cytometry](#)
- [Cell Culture](#)

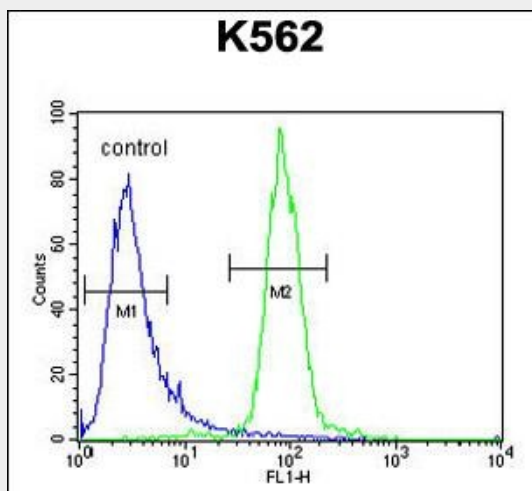
hCG_2024410 Antibody (C-term) - Images



hCG_2024410 Antibody (C-term) (Cat. #AP11040b) western blot analysis in K562 cell line lysates (35ug/lane). This demonstrates the hCG_2024410 antibody detected the hCG_2024410 protein (arrow).



hCG_2024410 Antibody (C-term) (Cat. #AP11040b) western blot analysis in mouse liver tissue lysates (35ug/lane). This demonstrates the CG antibody detected the CG protein (arrow).



hCG_2024410 Antibody (C-term) (Cat. #AP11040b) flow cytometric analysis of K562 cells (right histogram) compared to a negative control cell (left histogram). FITC-conjugated goat-anti-rabbit secondary antibodies were used for the analysis.

hCG_2024410 Antibody (C-term) - References

Marques, A.C., et al. PLoS Biol. 3 (11), E357 (2005) :
Venter, J.C., et al. Science 291(5507):1304-1351(2001)