

**C6orf138 Antibody (Center)**  
**Affinity Purified Rabbit Polyclonal Antibody (Pab)**  
**Catalog # AP11405c****Specification**

---

**C6orf138 Antibody (Center) - Product Information**

Application	WB, IHC-P,E
Primary Accession	<a href="#">Q6ZW05</a>
Other Accession	<a href="#">B9EKX1</a> , <a href="#">NP_997382.2</a> , <a href="#">NP_001013754.3</a>
Reactivity	Human
Predicted	Mouse
Host	Rabbit
Clonality	Polyclonal
Isotype	Rabbit IgG
Calculated MW	96371
Antigen Region	563-591

**C6orf138 Antibody (Center) - Additional Information****Gene ID** 442213**Other Names**

Patched domain-containing protein 4, PTCHD4, C6orf138

**Target/Specificity**

This C6orf138 antibody is generated from rabbits immunized with a KLH conjugated synthetic peptide between 563-591 amino acids from the Central region of human C6orf138.

**Dilution**

WB~~1:1000

IHC-P~~1:10~50

**Format**

Purified polyclonal antibody supplied in PBS with 0.09% (W/V) sodium azide. This antibody is purified through a protein A column, followed by peptide affinity purification.

**Storage**

Maintain refrigerated at 2-8°C for up to 2 weeks. For long term storage store at -20°C in small aliquots to prevent freeze-thaw cycles.

**Precautions**

C6orf138 Antibody (Center) is for research use only and not for use in diagnostic or therapeutic procedures.

**C6orf138 Antibody (Center) - Protein Information****Name** PTCHD4

**Synonyms** C6orf138, PTCH53

**Function** Could act as a repressor of canonical hedgehog signaling by antagonizing the effects of SMO, as suggested by down-regulation of hedgehog target genes, including GLI1, PTCH1, and PTCH2 in PTCHD4- expressing cells.

**Cellular Location**

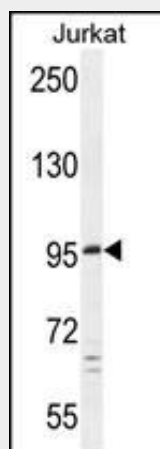
Membrane; Multi-pass membrane protein

**C6orf138 Antibody (Center) - Protocols**

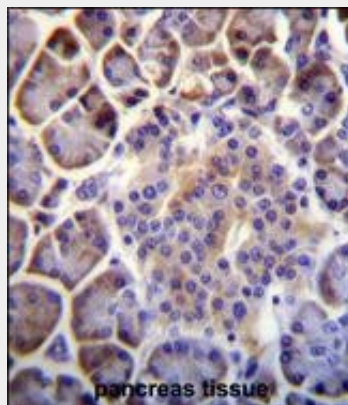
Provided below are standard protocols that you may find useful for product applications.

- [Western Blot](#)
- [Blocking Peptides](#)
- [Dot Blot](#)
- [Immunohistochemistry](#)
- [Immunofluorescence](#)
- [Immunoprecipitation](#)
- [Flow Cytometry](#)
- [Cell Culture](#)

**C6orf138 Antibody (Center) - Images**



C6orf138 Antibody (Center) (Cat. #AP11405c) western blot analysis in Jurkat cell line lysates (35ug/lane). This demonstrates the C6orf138 antibody detected the C6orf138 protein (arrow).



C6orf138 Antibody (Center) (Cat. #AP11405c)immunohistochemistry analysis in formalin fixed and paraffin embedded human pancreas tissue followed by peroxidase conjugation of the secondary antibody and DAB staining.This data demonstrates the use of C6orf138 Antibody (Center) for immunohistochemistry. Clinical relevance has not been evaluated.