

YI016 Antibody (C-term)
Affinity Purified Rabbit Polyclonal Antibody (Pab)
Catalog # AP11654b**Specification**

YI016 Antibody (C-term) - Product Information

Application	IF, WB, IHC-P, FC,E
Primary Accession	A6NKZ8
Other Accession	A6NNZ2
Reactivity	Human
Host	Rabbit
Clonality	Polyclonal
Isotype	Rabbit IgG
Antigen Region	253-280

YI016 Antibody (C-term) - Additional Information**Other Names**

Putative tubulin beta chain-like protein ENSP00000290377

Target/Specificity

This YI016 antibody is generated from rabbits immunized with a KLH conjugated synthetic peptide between 253-280 amino acids from the C-terminal region of human YI016.

Dilution

IF~~1:10~50
WB~~1:1000
IHC-P~~1:10~50
FC~~1:10~50

Format

Purified polyclonal antibody supplied in PBS with 0.09% (W/V) sodium azide. This antibody is purified through a protein A column, followed by peptide affinity purification.

Storage

Maintain refrigerated at 2-8°C for up to 2 weeks. For long term storage store at -20°C in small aliquots to prevent freeze-thaw cycles.

Precautions

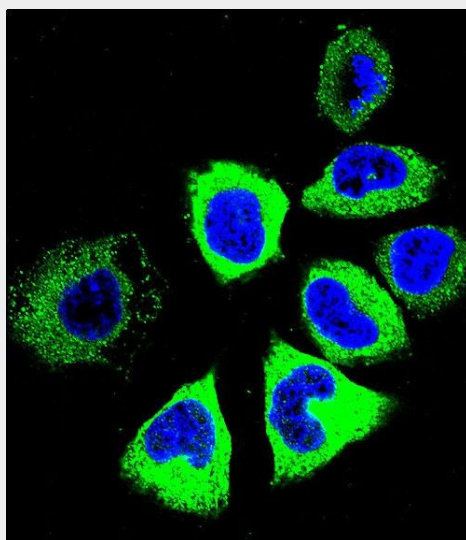
YI016 Antibody (C-term) is for research use only and not for use in diagnostic or therapeutic procedures.

YI016 Antibody (C-term) - Protein Information**YI016 Antibody (C-term) - Protocols**

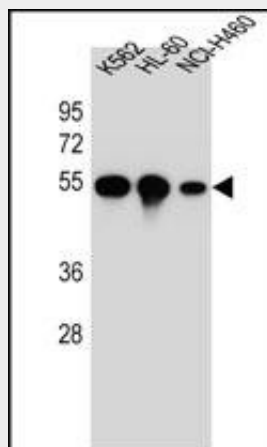
Provided below are standard protocols that you may find useful for product applications.

- [Western Blot](#)
- [Blocking Peptides](#)
- [Dot Blot](#)
- [Immunohistochemistry](#)
- [Immunofluorescence](#)
- [Immunoprecipitation](#)
- [Flow Cytometry](#)
- [Cell Culture](#)

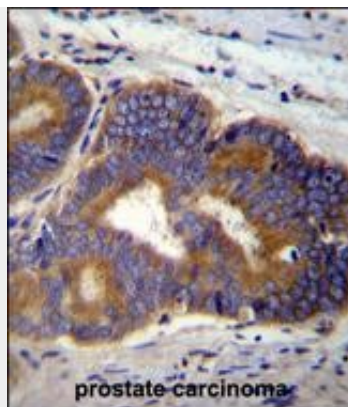
YI016 Antibody (C-term) - Images



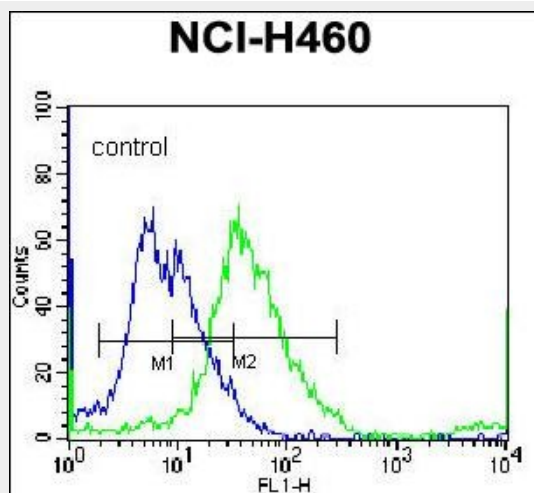
Confocal immunofluorescent analysis of YI016 Antibody (C-term)(Cat#AP11654b) with NCI-H460 cell followed by Alexa Fluor 488-conjugated goat anti-rabbit IgG (green). DAPI was used to stain the cell nuclear (blue).



YI016 Antibody (C-term) (Cat. #AP11654b) western blot analysis in K562,HL-60,NCI-H460 cell line lysates (35ug/lane).This demonstrates the YI016 antibody detected the YI016 protein (arrow).



YI016 Antibody (C-term) (Cat. #AP11654b) immunohistochemistry analysis in formalin fixed and paraffin embedded human prostate carcinoma followed by peroxidase conjugation of the secondary antibody and DAB staining. This data demonstrates the use of YI016 Antibody (C-term) for immunohistochemistry. Clinical relevance has not been evaluated.



YI016 Antibody (C-term) (Cat. #AP11654b) flow cytometric analysis of NCI-H460 cells (right histogram) compared to a negative control cell (left histogram). FITC-conjugated donkey-anti-rabbit secondary antibodies were used for the analysis.

YI016 Antibody (C-term) - Background

Tubulin is the major constituent of microtubules. It binds two moles of GTP, one at an exchangeable site on the beta chain and one at a non-exchangeable site on the alpha-chain (By similarity).