

**hCG\_1646420 Antibody (Center)**  
**Affinity Purified Rabbit Polyclonal Antibody (Pab)**  
**Catalog # AP12141c****Specification**

---

**hCG\_1646420 Antibody (Center) - Product Information**

Application	WB,E
Primary Accession	<a href="#">C9JDP6</a>
Other Accession	<a href="#">NP_001094859.1</a>
Reactivity	Human
Host	Rabbit
Clonality	Polyclonal
Isotype	Rabbit IgG
Calculated MW	25394
Antigen Region	99-128

**hCG\_1646420 Antibody (Center) - Additional Information****Gene ID** 644672**Other Names**

Putative claudin-25, CLDN25

**Target/Specificity**

This hCG\_1646420 antibody is generated from rabbits immunized with a KLH conjugated synthetic peptide between 99-128 amino acids from the Central region of human hCG\_1646420.

**Dilution**

WB~~1:1000

**Format**

Purified polyclonal antibody supplied in PBS with 0.09% (W/V) sodium azide. This antibody is purified through a protein A column, followed by peptide affinity purification.

**Storage**

Maintain refrigerated at 2-8°C for up to 2 weeks. For long term storage store at -20°C in small aliquots to prevent freeze-thaw cycles.

**Precautions**

hCG\_1646420 Antibody (Center) is for research use only and not for use in diagnostic or therapeutic procedures.

**hCG\_1646420 Antibody (Center) - Protein Information****Name** CLDN25

**Function** Plays a major role in tight junction-specific obliteration of the intercellular space, through calcium-independent cell-adhesion activity.

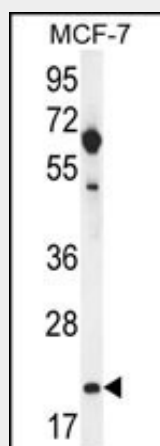
**Cellular Location**

Cell junction, tight junction. Cell membrane; Multi-pass membrane protein

**hCG\_1646420 Antibody (Center) - Protocols**

Provided below are standard protocols that you may find useful for product applications.

- [Western Blot](#)
- [Blocking Peptides](#)
- [Dot Blot](#)
- [Immunohistochemistry](#)
- [Immunofluorescence](#)
- [Immunoprecipitation](#)
- [Flow Cytometry](#)
- [Cell Culture](#)

**hCG\_1646420 Antibody (Center) - Images**

hCG\_1646420 Antibody (Center) (Cat. #AP12141c) western blot analysis in MCF-7 cell line lysates (35ug/lane). This demonstrates the hCG\_1646420 antibody detected the hCG\_1646420 protein (arrow).

**hCG\_1646420 Antibody (Center) - Background**

This gene encodes a member of the claudin family. Claudins are integral membrane proteins and components of tight junction strands. Tight junction strands serve as a physical barrier to prevent solutes and water from passing freely through the paracellular space between epithelial or endothelial cell sheets, and also play critical roles in maintaining cell polarity and signal transductions.

**hCG\_1646420 Antibody (Center) - References**

Lal-Nag, M., et al. Genome Biol. 10 (8), 235 (2009) :  
Krause, G., et al. Biochim. Biophys. Acta 1778(3):631-645(2008)  
Kato, M., et al. Int. J. Mol. Med. 11(6):683-689(2003)  
Venter, J.C., et al. Science 291(5507):1304-1351(2001)