

NRARP Antibody (Center)
Affinity Purified Rabbit Polyclonal Antibody (Pab)
Catalog # AP13638c**Specification**

NRARP Antibody (Center) - Product Information

Application	WB,E
Primary Accession	Q7Z6K4
Other Accession	Q5U5A6 , Q91ZA8 , NP_001004354.1
Reactivity	Human
Predicted	Mouse, Xenopus
Host	Rabbit
Clonality	Polyclonal
Isotype	Rabbit IgG
Calculated MW	12492
Antigen Region	56-83

NRARP Antibody (Center) - Additional Information**Gene ID** 441478**Other Names**

Notch-regulated ankyrin repeat-containing protein, NRARP

Target/Specificity

This NRARP antibody is generated from rabbits immunized with a KLH conjugated synthetic peptide between 56-83 amino acids from the Central region of human NRARP.

Dilution

WB~~1:1000

Format

Purified polyclonal antibody supplied in PBS with 0.09% (W/V) sodium azide. This antibody is purified through a protein A column, followed by peptide affinity purification.

Storage

Maintain refrigerated at 2-8°C for up to 2 weeks. For long term storage store at -20°C in small aliquots to prevent freeze-thaw cycles.

Precautions

NRARP Antibody (Center) is for research use only and not for use in diagnostic or therapeutic procedures.

NRARP Antibody (Center) - Protein Information**Name** NRARP**Function** Downstream effector of Notch signaling. Involved in the regulation of liver cancer cells

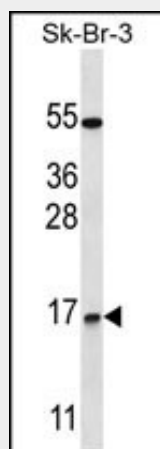
self-renewal (PubMed:[25985737](#)). Involved in angiogenesis acting downstream of Notch at branch points to regulate vascular density. Proposed to integrate endothelial Notch and Wnt signaling to control stalk cell proliferation and to stabilize new endothelial connections during angiogenesis (PubMed:[19154719](#)). During somitogenesis involved in maintenance of proper somite segmentation and proper numbers of somites and vertebrae. Required for proper anterior-posterior somite patterning. Proposed to function in a negative feedback loop to destabilize Notch 1 intracellular domain (NICD) and down-regulate the Notch signal, preventing expansion of the Notch signal into the anterior somite domain (By similarity).

NRARP Antibody (Center) - Protocols

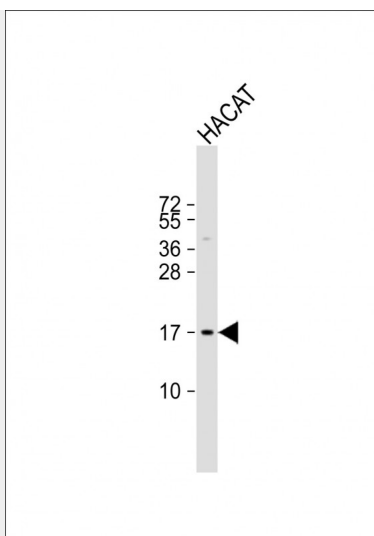
Provided below are standard protocols that you may find useful for product applications.

- [Western Blot](#)
- [Blocking Peptides](#)
- [Dot Blot](#)
- [Immunohistochemistry](#)
- [Immunofluorescence](#)
- [Immunoprecipitation](#)
- [Flow Cytometry](#)
- [Cell Culture](#)

NRARP Antibody (Center) - Images



NRARP Antibody (Center) (Cat. #AP13638c) western blot analysis in SK-BR-3 cell line lysates (35ug/lane). This demonstrates the NRARP antibody detected the NRARP protein (arrow).



Anti-NRARP Antibody (Center) at 1:1000 dilution + HACAT whole cell lysate Lysates/proteins at 20 μ g per lane. Secondary Goat Anti-Rabbit IgG, (H+L), Peroxidase conjugated at 1/10000 dilution. Predicted band size : 12 kDa Blocking/Dilution buffer: 5% NFDM/TBST.

NRARP Antibody (Center) - Background

NRARP may play a role in the formation of somites (By similarity).

NRARP Antibody (Center) - References

- Lamesch, P., et al. Genomics 89(3):307-315(2007)
Wang, A.G., et al. Biochem. Biophys. Res. Commun. 345(3):1022-1032(2006)