

C5orf33 Antibody (Center)
Affinity Purified Rabbit Polyclonal Antibody (Pab)
Catalog # AP13805c**Specification**

C5orf33 Antibody (Center) - Product Information

Application	WB, IHC-P,E
Primary Accession	O4G0N4
Other Accession	O1HCL7 , O8C5H8 , NP_694558.1 , NP_001078880.1
Reactivity	Human, Mouse
Predicted	Rat
Host	Rabbit
Clonality	Polyclonal
Isotype	Rabbit IgG
Calculated MW	49433
Antigen Region	122-150

C5orf33 Antibody (Center) - Additional Information**Gene ID** 133686**Other Names**

NAD kinase 2, mitochondrial, Mitochondrial NAD kinase, NAD kinase domain-containing protein 1, mitochondrial, NADK2, C5orf33, MNADK, NADKD1

Target/Specificity

This C5orf33 antibody is generated from rabbits immunized with a KLH conjugated synthetic peptide between 122-150 amino acids from the Central region of human C5orf33.

DilutionWB~~1:1000
IHC-P~~1:10~50**Format**

Purified polyclonal antibody supplied in PBS with 0.09% (W/V) sodium azide. This antibody is purified through a protein A column, followed by peptide affinity purification.

Storage

Maintain refrigerated at 2-8°C for up to 2 weeks. For long term storage store at -20°C in small aliquots to prevent freeze-thaw cycles.

Precautions

C5orf33 Antibody (Center) is for research use only and not for use in diagnostic or therapeutic procedures.

C5orf33 Antibody (Center) - Protein Information

Name NADK2

Synonyms C5orf33, MNADK, NADKD1

Function Mitochondrial NAD(+) kinase that phosphorylates NAD(+) to yield NADP(+). Can use both ATP or inorganic polyphosphate as the phosphoryl donor. Also has weak NADH kinase activity in vitro; however NADH kinase activity is much weaker than the NAD(+) kinase activity and may not be relevant in vivo.

Cellular Location
Mitochondrion.

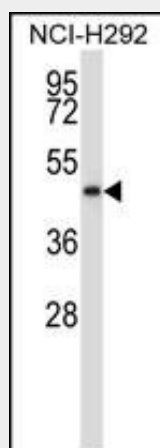
Tissue Location
Widely expressed..

C5orf33 Antibody (Center) - Protocols

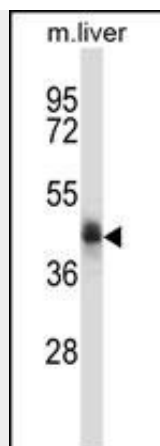
Provided below are standard protocols that you may find useful for product applications.

- [Western Blot](#)
- [Blocking Peptides](#)
- [Dot Blot](#)
- [Immunohistochemistry](#)
- [Immunofluorescence](#)
- [Immunoprecipitation](#)
- [Flow Cytometry](#)
- [Cell Culture](#)

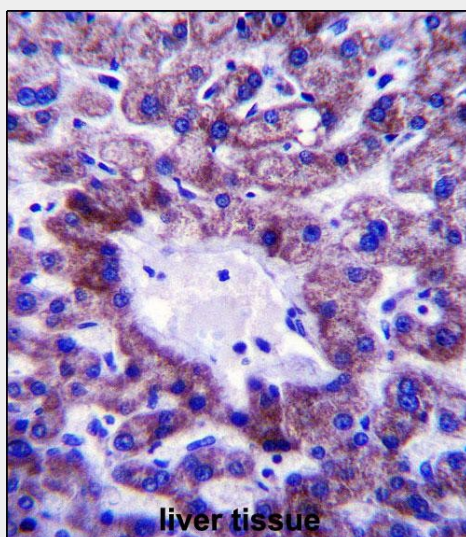
C5orf33 Antibody (Center) - Images



C5orf33 Antibody (Center) (Cat. #AP13805c) western blot analysis in NCI-H292 cell line lysates (35ug/lane). This demonstrates the C5orf33 antibody detected the C5orf33 protein (arrow).



C5orf33 Antibody (Center) (Cat. #AP13805c) western blot analysis in mouse liver tissue lysates (35ug/lane). This demonstrates the C5orf33 antibody detected the C5orf33 protein (arrow).



C5orf33 Antibody (Center) (Cat. #AP13805c) immunohistochemistry analysis in formalin fixed and paraffin embedded human liver tissue followed by peroxidase conjugation of the secondary antibody and DAB staining. This data demonstrates the use of C5orf33 Antibody (Center) for immunohistochemistry. Clinical relevance has not been evaluated.

C5orf33 Antibody (Center) - Background

The specific function of C5ORF33 is not yet known. There are three named isoforms.

C5orf33 Antibody (Center) - References

Lamesch, P., et al. Genomics 89(3):307-315(2007)
Adams, M.D., et al. Nature 377 (6547 SUPPL), 3-174 (1995) :