

C13orf30 Antibody (C-term)
Purified Rabbit Polyclonal Antibody (Pab)
Catalog # AP20605c**Specification**

C13orf30 Antibody (C-term) - Product Information

Application	WB, IHC-P,E
Primary Accession	Q8N7L0
Reactivity	Human
Host	Rabbit
Clonality	Polyclonal
Isotype	Rabbit IgG
Calculated MW	16362

C13orf30 Antibody (C-term) - Additional Information**Gene ID** 144809**Other Names**

Protein FAM216B, FAM216B, C13orf30

Target/Specificity

This C13orf30 antibody is generated from a rabbit immunized with a KLH conjugated synthetic peptide between 106-139 amino acids from the C-terminal region of human C13orf30.

Dilution

WB~~1:1000

IHC-P~~1:25

Format

Purified polyclonal antibody supplied in PBS with 0.09% (W/V) sodium azide. This antibody is purified through a protein A column, followed by peptide affinity purification.

Storage

Maintain refrigerated at 2-8°C for up to 2 weeks. For long term storage store at -20°C in small aliquots to prevent freeze-thaw cycles.

Precautions

C13orf30 Antibody (C-term) is for research use only and not for use in diagnostic or therapeutic procedures.

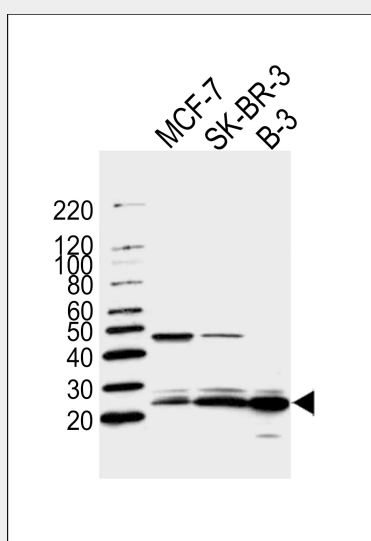
C13orf30 Antibody (C-term) - Protein Information**Name** FAM216B**Synonyms** C13orf30

C13orf30 Antibody (C-term) - Protocols

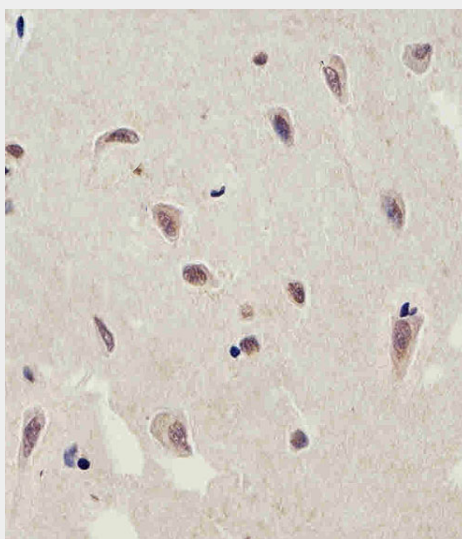
Provided below are standard protocols that you may find useful for product applications.

- [Western Blot](#)
- [Blocking Peptides](#)
- [Dot Blot](#)
- [Immunohistochemistry](#)
- [Immunofluorescence](#)
- [Immunoprecipitation](#)
- [Flow Cytometry](#)
- [Cell Culture](#)

C13orf30 Antibody (C-term) - Images

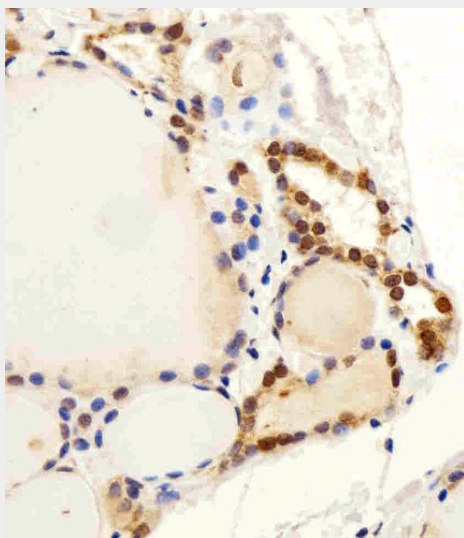


Western blot analysis of lysates from MCF-7, SK-BR-3, B-3 cell line (from left to right), using C13orf30 Antibody (C-term)(Cat. #AP20605c). AP20605c was diluted at 1:1000 at each lane. A goat anti-rabbit IgG H&L(HRP) at 1:5000 dilution was used as the secondary antibody. Lysates at 35ug per lane.



Immunohistochemical analysis of paraffin-embedded H.brain section using C13orf30 Antibody

(C-term)(Cat#AP20605c). AP20605c was diluted at 1:25 dilution. A peroxidase-conjugated goat anti-rabbit IgG at 1:400 dilution was used as the secondary antibody, followed by DAB staining.



Immunohistochemical analysis of paraffin-embedded H.thyroid section using C13orf30 Antibody (C-term)(Cat#AP20605c). AP20605c was diluted at 1:25 dilution. A peroxidase-conjugated goat anti-rabbit IgG at 1:400 dilution was used as the secondary antibody, followed by DAB staining.

C13orf30 Antibody (C-term) - References

Ota T.,et al.Nat. Genet. 36:40-45(2004).

Dunham A.,et al.Nature 428:522-528(2004).

Mural R.J.,et al.Submitted (JUL-2005) to the EMBL/GenBank/DDBJ databases.