

HUMAN-GAB1(Y259) Antibody
Purified Rabbit Polyclonal Antibody (Pab)
Catalog # AP20723b**Specification**

HUMAN-GAB1(Y259) Antibody - Product Information

| | |
|-------------------|------------------------|
| Application | WB,E |
| Primary Accession | Q13480 |
| Reactivity | Human |
| Host | Rabbit |
| Clonality | Polyclonal |
| Isotype | Rabbit IgG |

HUMAN-GAB1(Y259) Antibody - Additional Information**Gene ID** 2549**Other Names**

GRB2-associated-binding protein 1, GRB2-associated binder 1, Growth factor receptor bound protein 2-associated protein 1, GAB1

Target/Specificity

This antibody is generated from a rabbit immunized with a KLH conjugated synthetic peptide between 250-285 amino acids from human.

Dilution

WB~~1:1000

E~~Use at an assay dependent concentration.

Format

Purified polyclonal antibody supplied in PBS with 0.09% (W/V) sodium azide. This antibody is purified through a protein A column, followed by peptide affinity purification.

Storage

Maintain refrigerated at 2-8°C for up to 2 weeks. For long term storage store at -20°C in small aliquots to prevent freeze-thaw cycles.

Precautions

HUMAN-GAB1(Y259) Antibody is for research use only and not for use in diagnostic or therapeutic procedures.

HUMAN-GAB1(Y259) Antibody - Protein Information**Name** GAB1

Function Adapter protein that plays a role in intracellular signaling cascades triggered by activated receptor-type kinases. Plays a role in FGFR1 signaling. Probably involved in signaling by the epidermal growth factor receptor (EGFR) and the insulin receptor (INSR). Involved in the

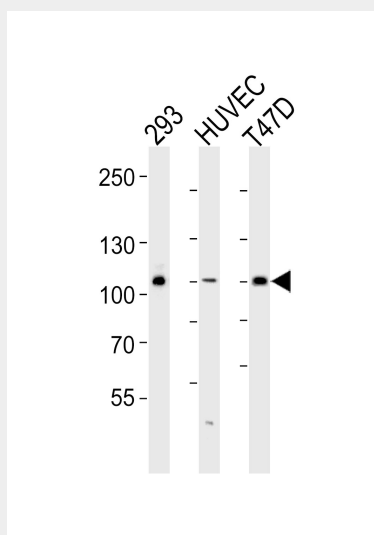
MET/HGF-signaling pathway (PubMed:[29408807](#)).

HUMAN-GAB1(Y259) Antibody - Protocols

Provided below are standard protocols that you may find useful for product applications.

- [Western Blot](#)
- [Blocking Peptides](#)
- [Dot Blot](#)
- [Immunohistochemistry](#)
- [Immunofluorescence](#)
- [Immunoprecipitation](#)
- [Flow Cytometry](#)
- [Cell Culture](#)

HUMAN-GAB1(Y259) Antibody - Images



Western blot analysis of lysates from 293, HUVEC, T47D cell line (from left to right), using HUMAN-GAB1(Y259) (Cat. #AP20723b). AP20723b was diluted at 1:1000 at each lane. A goat anti-rabbit IgG H&L(HRP) at 1:5000 dilution was used as the secondary antibody. Lysates at 35ug per lane.

HUMAN-GAB1(Y259) Antibody - Background

Adapter protein that plays a role in intracellular signaling cascades triggered by activated receptor-type kinases. Plays a role in FGFR1 signaling. Probably involved in signaling by the epidermal growth factor receptor (EGFR) and the insulin receptor (INSR).

HUMAN-GAB1(Y259) Antibody - References

Holgado-Madruga M.,et al.Nature 379:560-564(1996).
Ota T.,et al.Nat. Genet. 36:40-45(2004).
Hillier L.W.,et al.Nature 434:724-731(2005).
Mural R.J.,et al.Submitted (SEP-2005) to the EMBL/GenBank/DDBJ databases.
Brdicka T.,et al.J. Exp. Med. 196:1617-1626(2002).