

**(DANRE) mab2112 Antibody (Center)**  
**Purified Rabbit Polyclonal Antibody (Pab)**  
**Catalog # AP20804c**

### Specification

---

#### (DANRE) mab2112 Antibody (Center) - Product Information

Application	WB,E
Primary Accession	<a href="#">Q8UUZ1</a>
Other Accession	<a href="#">Q8BPP1</a> , <a href="#">Q9Y586</a>
Reactivity	Zebrafish
Predicted	Human, Mouse
Host	Rabbit
Clonality	Polyclonal
Isotype	Rabbit IgG
Calculated MW	41014
Antigen Region	185-219

#### (DANRE) mab2112 Antibody (Center) - Additional Information

**Gene ID** 117234

#### Other Names

Protein mab-21-like 2, mab2112

#### Target/Specificity

This (DANRE) mab2112 antibody is generated from a rabbit immunized with a KLH conjugated synthetic peptide between 185-219 amino acids from the Central region of human (DANRE) mab2112.

#### Dilution

WB~~1:1000

#### Format

Purified polyclonal antibody supplied in PBS with 0.09% (W/V) sodium azide. This antibody is purified through a protein A column, followed by peptide affinity purification.

#### Storage

Maintain refrigerated at 2-8°C for up to 2 weeks. For long term storage store at -20°C in small aliquots to prevent freeze-thaw cycles.

#### Precautions

(DANRE) mab2112 Antibody (Center) is for research use only and not for use in diagnostic or therapeutic procedures.

#### (DANRE) mab2112 Antibody (Center) - Protein Information

**Name** mab2112

**Function** Required for eye morphogenesis. May promote the survival of proliferating retinal progenitor cells.

**Cellular Location**

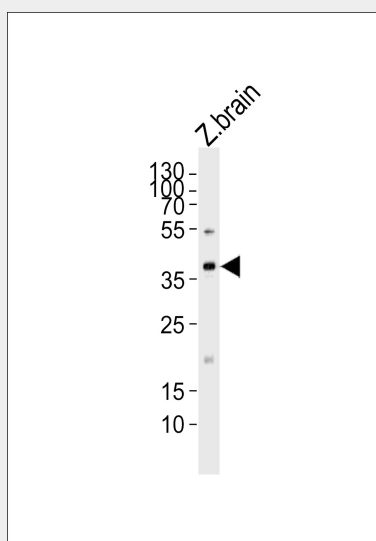
Nucleus. Cytoplasm Note=Predominantly localizes to the nucleus, with some cytoplasmic localization (PubMed:25719200).

**(DANRE) mab2112 Antibody (Center) - Protocols**

Provided below are standard protocols that you may find useful for product applications.

- [Western Blot](#)
- [Blocking Peptides](#)
- [Dot Blot](#)
- [Immunohistochemistry](#)
- [Immunofluorescence](#)
- [Immunoprecipitation](#)
- [Flow Cytometry](#)
- [Cell Culture](#)

**(DANRE) mab2112 Antibody (Center) - Images**



Western blot analysis of lysate from zebra fish brain tissue lysate, using (DANRE) mab2112 Antibody (Center)(Cat. #AP20804c). AP20804c was diluted at 1:1000. A goat anti-rabbit IgG H&L(HRP) at 1:10000 dilution was used as the secondary antibody. Lysate at 35ug.

**(DANRE) mab2112 Antibody (Center) - Background**

Required for eye morphogenesis. May promote the survival of proliferating retinal progenitor cells.

**(DANRE) mab2112 Antibody (Center) - References**

- Kudoh T.,et al.Mech. Dev. 109:95-98(2001).  
Wong Y.-M.,et al.Mech. Dev. 113:149-152(2002).  
Kennedy B.N.,et al.Dev. Biol. 270:336-349(2004).  
Wu S.,et al.Mol. Cell. Endocrinol. 257:47-64(2006).