

Mouse Gata6 Antibody (C-term)
Purified Rabbit Polyclonal Antibody (Pab)
Catalog # AP20864c

Specification

Mouse Gata6 Antibody (C-term) - Product Information

| | |
|-------------------|---|
| Application | WB,E |
| Primary Accession | O61169 |
| Other Accession | P46153 , P43693 |
| Reactivity | Human, Mouse |
| Predicted | Chicken, Rat |
| Host | Rabbit |
| Clonality | Polyclonal |
| Isotype | Rabbit IgG |
| Calculated MW | 59307 |

Mouse Gata6 Antibody (C-term) - Additional Information

Gene ID 14465

Other Names

Transcription factor GATA-6, GATA-binding factor 6, Gata6

Target/Specificity

This Mouse Gata6 antibody is generated from a rabbit immunized with a KLH conjugated synthetic peptide between 485-518 amino acids from the C-terminal region of human Mouse Gata6.

Dilution

WB~~1:1000

Format

Purified polyclonal antibody supplied in PBS with 0.09% (W/V) sodium azide. This antibody is purified through a protein A column, followed by peptide affinity purification.

Storage

Maintain refrigerated at 2-8°C for up to 2 weeks. For long term storage store at -20°C in small aliquots to prevent freeze-thaw cycles.

Precautions

Mouse Gata6 Antibody (C-term) is for research use only and not for use in diagnostic or therapeutic procedures.

Mouse Gata6 Antibody (C-term) - Protein Information

Name Gata6

Function Transcriptional activator that regulates SEMA3C and PLXNA2 (PubMed:[19666519](#)). May regulate genes that protect epithelial cells from bacterial infection (By similarity). Involved in gene

regulation specifically in the gastric epithelium (By similarity). Involved in bone morphogenetic protein (BMP)-mediated cardiac-specific gene expression (PubMed:[15329343](#)). Binds to BMP response element (BMPRE) DNA sequences within cardiac activating regions (PubMed:[15329343](#)).

Cellular Location

Nucleus.

Tissue Location

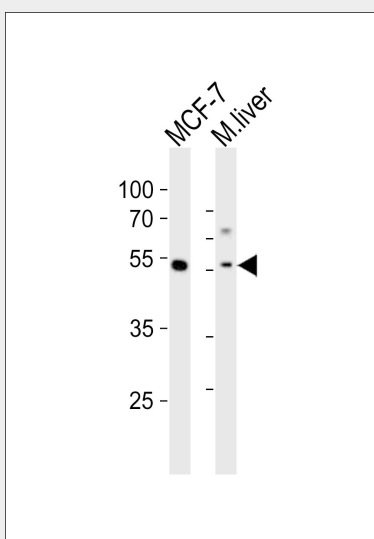
Expressed in myocardium, vascular smooth muscle, gut epithelium, and osteoclasts

Mouse Gata6 Antibody (C-term) - Protocols

Provided below are standard protocols that you may find useful for product applications.

- [Western Blot](#)
- [Blocking Peptides](#)
- [Dot Blot](#)
- [Immunohistochemistry](#)
- [Immunofluorescence](#)
- [Immunoprecipitation](#)
- [Flow Cytometry](#)
- [Cell Culture](#)

Mouse Gata6 Antibody (C-term) - Images



Western blot analysis of lysates from MCF-7 cell line, mouse liver tissue lysate (from left to right), using Gata6 Antibody (C-term)(Cat. #AP20864c). AP20864c was diluted at 1:1000 at each lane. A goat anti-rabbit IgG H&L(HRP) at 1:10000 dilution was used as the secondary antibody. Lysates at 20ug per lane.

Mouse Gata6 Antibody (C-term) - Background

Transcriptional activator that regulates SEMA3C and PLXNA2. Involved in gene regulation specifically in the gastric epithelium (By similarity).

Mouse Gata6 Antibody (C-term) - References

Morrissey E.E., et al. Dev. Biol. 177:309-322(1996).
Katsuoka F., et al. Submitted (AUG-1999) to the EMBL/GenBank/DDBJ databases.
Carninci P., et al. Science 309:1559-1563(2005).
Mural R.J., et al. Submitted (SEP-2005) to the EMBL/GenBank/DDBJ databases.
Narita N., et al. Genomics 36:345-348(1996).