

(DANRE) usp13 Antibody (Center)
Purified Rabbit Polyclonal Antibody (Pab)
Catalog # AP21083a

Specification

(DANRE) usp13 Antibody (Center) - Product Information

| | |
|-------------------|---|
| Application | WB,E |
| Primary Accession | F1QFS9 |
| Other Accession | Q5BKP2 , Q92995 , E1BY77 , E1BMF7 |
| Reactivity | Zebrafish |
| Predicted | Bovine, Chicken, Human, Mouse |
| Host | Rabbit |
| Clonality | Polyclonal |
| Isotype | Rabbit IgG |
| Calculated MW | 97452 |
| Antigen Region | 387-420 |

(DANRE) usp13 Antibody (Center) - Additional Information

Gene ID 558011

Other Names

Ubiquitin carboxyl-terminal hydrolase 13, Deubiquitinating enzyme 13, Ubiquitin thioesterase 13, Ubiquitin-specific-processing protease 13, usp13

Target/Specificity

This DANRE usp13 antibody is generated from a rabbit immunized with a KLH conjugated synthetic peptide between 387-420 amino acids from the Central region of DANRE usp13.

Dilution

WB~~1:1000

E~~Use at an assay dependent concentration.

Format

Purified polyclonal antibody supplied in PBS with 0.09% (W/V) sodium azide. This antibody is purified through a protein A column, followed by peptide affinity purification.

Storage

Maintain refrigerated at 2-8°C for up to 2 weeks. For long term storage store at -20°C in small aliquots to prevent freeze-thaw cycles.

Precautions

(DANRE) usp13 Antibody (Center) is for research use only and not for use in diagnostic or therapeutic procedures.

(DANRE) usp13 Antibody (Center) - Protein Information

Name usp13

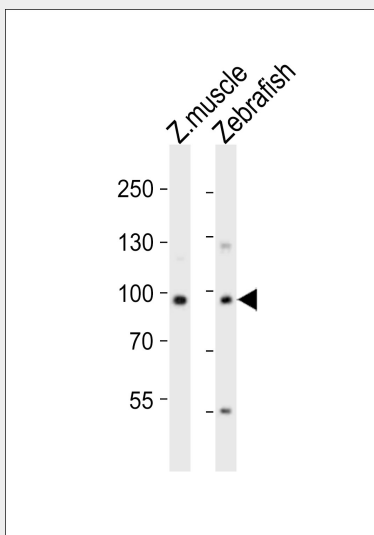
Function Deubiquitinase that mediates deubiquitination of target proteins and is involved in various processes such as autophagy and endoplasmic reticulum-associated degradation (ERAD).

(DANRE) usp13 Antibody (Center) - Protocols

Provided below are standard protocols that you may find useful for product applications.

- [Western Blot](#)
- [Blocking Peptides](#)
- [Dot Blot](#)
- [Immunohistochemistry](#)
- [Immunofluorescence](#)
- [Immunoprecipitation](#)
- [Flow Cytometry](#)
- [Cell Culture](#)

(DANRE) usp13 Antibody (Center) - Images



Western blot analysis of lysates from zebra fish muscle, Zebrafish cell line (from left to right), using (DANRE) usp13 Antibody (Center)(Cat. #AP21083a). AP21083a was diluted at 1:1000 at each lane. A goat anti-rabbit IgG H&L(HRP) at 1:10000 dilution was used as the secondary antibody. Lysates at 20ug per lane.

(DANRE) usp13 Antibody (Center) - Background

Deubiquitinase that mediates deubiquitination of target proteins and is involved in various processes such as autophagy and endoplasmic reticulum-associated degradation (ERAD) (By similarity).

(DANRE) usp13 Antibody (Center) - References

Howe K.,et al.Nature 496:498-503(2013).