

**(Mouse) Rps6ka1 Antibody (C-term)**  
**Purified Rabbit Polyclonal Antibody (Pab)**  
**Catalog # AP21230b**

**Specification**

---

**(Mouse) Rps6ka1 Antibody (C-term) - Product Information**

Application	WB,E
Primary Accession	<a href="#">P18653</a>
Reactivity	Human, Mouse, Rat
Host	Rabbit
Clonality	polyclonal
Isotype	Rabbit IgG
Calculated MW	81595

**(Mouse) Rps6ka1 Antibody (C-term) - Additional Information**

**Gene ID** 20111

**Target/Specificity**

This mouse Rps6ka1 antibody is generated from a rabbit immunized with a KLH conjugated synthetic peptide between 704-738 amino acids from the C-terminal region of mouse Rps6ka1.

**Dilution**

WB~~1:2000

**Storage**

Maintain refrigerated at 2-8°C for up to 2 weeks. For long term storage store at -20°C in small aliquots to prevent freeze-thaw cycles.

**Precautions**

(Mouse) Rps6ka1 Antibody (C-term) is for research use only and not for use in diagnostic or therapeutic procedures.

**(Mouse) Rps6ka1 Antibody (C-term) - Protein Information**

**Name** Rps6ka1

**Synonyms** Mapkapk1a, Rsk1

**Function** Serine/threonine-protein kinase that acts downstream of ERK (MAPK1/ERK2 and MAPK3/ERK1) signaling and mediates mitogenic and stress-induced activation of the transcription factors CREB1, ETV1/ER81 and NR4A1/NUR77, regulates translation through RPS6 and EIF4B phosphorylation, and mediates cellular proliferation, survival, and differentiation by modulating mTOR signaling and repressing pro- apoptotic function of BAD and DAPK1 (By similarity). In fibroblast, is required for EGF-stimulated phosphorylation of CREB1, which results in the subsequent transcriptional activation of several immediate-early genes (By similarity). In response to mitogenic stimulation (EGF and PMA), phosphorylates and activates NR4A1/NUR77 and ETV1/ER81 transcription factors and the cofactor CREBBP (By similarity). Upon insulin-derived

signal, acts indirectly on the transcription regulation of several genes by phosphorylating GSK3B at 'Ser-9' and inhibiting its activity (By similarity). Phosphorylates RPS6 in response to serum or EGF via an mTOR-independent mechanism and promotes translation initiation by facilitating assembly of the pre-initiation complex (By similarity). In response to insulin, phosphorylates EIF4B, enhancing EIF4B affinity for the EIF3 complex and stimulating cap-dependent translation (By similarity). Is involved in the mTOR nutrient-sensing pathway by directly phosphorylating TSC2 at 'Ser-1798', which potentially inhibits TSC2 ability to suppress mTOR signaling, and mediates phosphorylation of RPTOR, which regulates mTORC1 activity and may promote rapamycin-sensitive signaling independently of the PI3K/AKT pathway (By similarity). Also involved in feedback regulation of mTORC1 and mTORC2 by phosphorylating DEPTOR (By similarity). Mediates cell survival by phosphorylating the pro-apoptotic proteins BAD and DAPK1 and suppressing their pro-apoptotic function (By similarity). Promotes the survival of hepatic stellate cells by phosphorylating CEBPB in response to the hepatotoxin carbon tetrachloride (CCl4) (PubMed:[10635333](#)). Mediates induction of hepatocyte proliferation by TGFA through phosphorylation of CEBPB (By similarity). Is involved in cell cycle regulation by phosphorylating the CDK inhibitor CDKN1B, which promotes CDKN1B association with 14-3-3 proteins and prevents its translocation to the nucleus and inhibition of G1 progression (By similarity). Phosphorylates EPHA2 at 'Ser-897', the RPS6KA-EPHA2 signaling pathway controls cell migration (By similarity). In response to mTORC1 activation, phosphorylates EIF4B at 'Ser-406' and 'Ser-422' which stimulates bicarbonate cotransporter SLC4A7 mRNA translation, increasing SLC4A7 protein abundance and function (By similarity).

**Cellular Location**

Nucleus. Cytoplasm.

**Tissue Location**

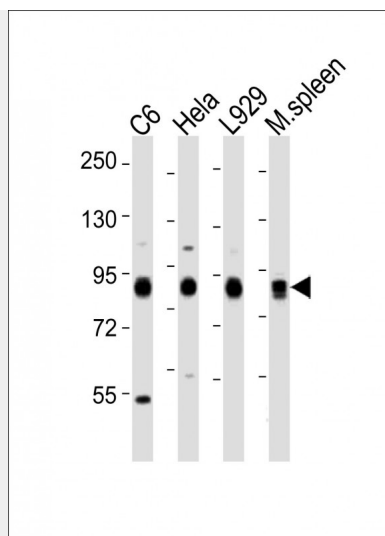
Intestine, thymus, and lung.

**(Mouse) Rps6ka1 Antibody (C-term) - Protocols**

Provided below are standard protocols that you may find useful for product applications.

- [Western Blot](#)
- [Blocking Peptides](#)
- [Dot Blot](#)
- [Immunohistochemistry](#)
- [Immunofluorescence](#)
- [Immunoprecipitation](#)
- [Flow Cytometry](#)
- [Cell Culture](#)

**(Mouse) Rps6ka1 Antibody (C-term) - Images**



All lanes : Anti-Rps6ka1 Antibody (C-term) at 1:2000 dilution Lane 1: C6 whole cell lysates Lane 2: HeLa whole cell lysates Lane 3: L929 whole cell lysates Lane 4: mouse spleen lysates Lysates/proteins at 20 µg per lane. Secondary Goat Anti-Rabbit IgG, (H+L), Peroxidase conjugated at 1/10000 dilution Predicted band size : 82 kDa Blocking/Dilution buffer: 5% NFDM/TBST.