

**(Mouse) Trex2 Antibody (C-term)**  
**Purified Rabbit Polyclonal Antibody (Pab)**  
**Catalog # AP21350b**

**Specification**

---

**(Mouse) Trex2 Antibody (C-term) - Product Information**

Application	WB,E
Primary Accession	<a href="#">O9R1A9</a>
Reactivity	Rat
Host	Rabbit
Clonality	polyclonal
Isotype	Rabbit IgG
Calculated MW	25955

**(Mouse) Trex2 Antibody (C-term) - Additional Information**

**Gene ID** 24102

**Other Names**

Three prime repair exonuclease 2, 3'-5' exonuclease TREX2, Trex2

**Target/Specificity**

This Mouse Trex2 antibody is generated from a rabbit immunized with a KLH conjugated synthetic peptide between 223-276 amino acids from the C-terminal region of Mouse Trex2.

**Dilution**

WB~~1:1000

**Format**

Purified polyclonal antibody supplied in PBS with 0.09% (W/V) sodium azide. This antibody is purified through a protein A column, followed by peptide affinity purification.

**Storage**

Maintain refrigerated at 2-8°C for up to 2 weeks. For long term storage store at -20°C in small aliquots to prevent freeze-thaw cycles.

**Precautions**

(Mouse) Trex2 Antibody (C-term) is for research use only and not for use in diagnostic or therapeutic procedures.

**(Mouse) Trex2 Antibody (C-term) - Protein Information**

**Name** Trex2

**Function** Exonuclease with a preference for double-stranded DNA with mismatched 3' termini. May play a role in DNA repair.

**Cellular Location**

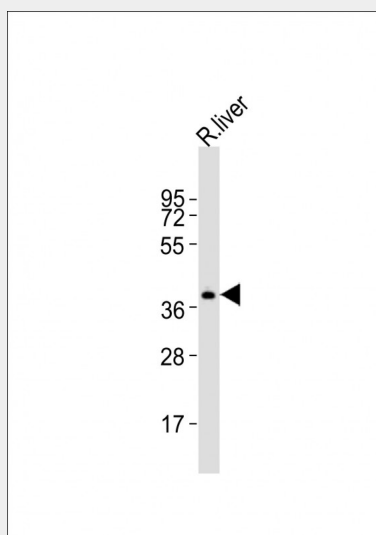
Nucleus.

### **(Mouse) Trex2 Antibody (C-term) - Protocols**

Provided below are standard protocols that you may find useful for product applications.

- [Western Blot](#)
- [Blocking Peptides](#)
- [Dot Blot](#)
- [Immunohistochemistry](#)
- [Immunofluorescence](#)
- [Immunoprecipitation](#)
- [Flow Cytometry](#)
- [Cell Culture](#)

### **(Mouse) Trex2 Antibody (C-term) - Images**



Anti-Trex2 Antibody (C-term) at 1:1000 dilution + rat liver lysates. Lysates/proteins at 20 µg per lane. Secondary Goat Anti-Rabbit IgG, (H+L), Peroxidase conjugated at 1/10000 dilution. Predicted band size : 26 kDa. Blocking/Dilution buffer: 5% NFDM/TBST.

### **(Mouse) Trex2 Antibody (C-term) - Background**

Exonuclease with a preference for double-stranded DNA with mismatched 3' termini. May play a role in DNA repair.

### **(Mouse) Trex2 Antibody (C-term) - References**

Mazur D.J., et al. J. Biol. Chem. 274:19655-19660(1999).