

**Phospho-HUMAN-PIK3C2B(Y228) Antibody**  
**Purified Rabbit Polyclonal Antibody (Pab)**  
**Catalog # AP3903b****Specification**

---

**Phospho-HUMAN-PIK3C2B(Y228) Antibody - Product Information**

Application	WB,E
Primary Accession	<a href="#">O00750</a>
Reactivity	Human
Host	Rabbit
Clonality	Polyclonal
Isotype	Rabbit IgG

**Phospho-HUMAN-PIK3C2B(Y228) Antibody - Additional Information****Gene ID** 5287**Other Names**

Phosphatidylinositol 4-phosphate 3-kinase C2 domain-containing subunit beta, PI3K-C2-beta, PtdIns-3-kinase C2 subunit beta, C2-PI3K, Phosphoinositide 3-kinase-C2-beta, PIK3C2B

**Target/Specificity**

This antibody is generated from a rabbit immunized with a KLH conjugated synthetic peptide between 215-250 amino acids from human.

**Dilution**

WB~~1:1000

E~~Use at an assay dependent concentration.

**Format**

Purified polyclonal antibody supplied in PBS with 0.09% (W/V) sodium azide. This antibody is purified through a protein A column, followed by peptide affinity purification.

**Storage**

Maintain refrigerated at 2-8°C for up to 2 weeks. For long term storage store at -20°C in small aliquots to prevent freeze-thaw cycles.

**Precautions**

Phospho-HUMAN-PIK3C2B(Y228) Antibody is for research use only and not for use in diagnostic or therapeutic procedures.

**Phospho-HUMAN-PIK3C2B(Y228) Antibody - Protein Information****Name** PIK3C2B

**Function** Phosphorylates PtdIns and PtdIns4P with a preference for PtdIns (PubMed:[10805725](#), PubMed:[11533253](#), PubMed:[9830063](#)). Does not phosphorylate PtdIns(4,5)P2 (PubMed:[9830063](#)). May be involved in EGF and PDGF signaling cascades (PubMed:[10805725](#)).

**Cellular Location**

Microsome. Cell membrane. Cytoplasm, cytosol Nucleus. Endoplasmic reticulum. Note=Found mostly in the microsome, but also in the plasma membrane and cytosol. Nuclear in testis

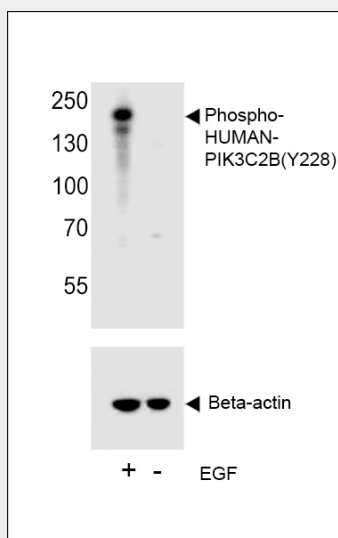
**Tissue Location**

Expressed in columnar and transitional epithelia, mononuclear cells, and ganglion cells (at protein level). Widely expressed, with highest levels in thymus and placenta and lowest in peripheral blood, skeletal muscle and kidney

**Phospho-HUMAN-PIK3C2B(Y228) Antibody - Protocols**

Provided below are standard protocols that you may find useful for product applications.

- [Western Blot](#)
- [Blocking Peptides](#)
- [Dot Blot](#)
- [Immunohistochemistry](#)
- [Immunofluorescence](#)
- [Immunoprecipitation](#)
- [Flow Cytometry](#)
- [Cell Culture](#)

**Phospho-HUMAN-PIK3C2B(Y228) Antibody - Images**

Western blot analysis of lysate from A431 cell line, using Phospho-HUMAN-PIK3C2B(Y228)(Cat. #AP3903b). AP3903b was diluted at 1:1000. A goat anti-rabbit IgG H&L(HRP) at 1:5000 dilution was used as the secondary antibody. Lysate at 35ug treated by EGF100ng/ml for 5 min.

**Phospho-HUMAN-PIK3C2B(Y228) Antibody - Background**

Phosphorylates PtdIns and PtdIns4P with a preference for PtdIns. Does not phosphorylate PtdIns(4,5)P2. May be involved in EGF and PDGF signaling cascades.

**Phospho-HUMAN-PIK3C2B(Y228) Antibody - References**

Brown R.A.,et al.Biochem. Biophys. Res. Commun. 233:537-544(1997).  
Arcaro A.,et al.J. Biol. Chem. 273:33082-33090(1998).

Gregory S.G.,et al.Nature 441:315-321(2006).  
Arcaro A.,et al.Mol. Cell. Biol. 20:3817-3830(2000).  
Wheeler M.,et al.Mol. Cell. Biol. 21:6660-6667(2001).