

**C1orf186 Antibody (C-term)**  
**Affinity Purified Rabbit Polyclonal Antibody (Pab)**  
**Catalog # AP5963b****Specification**

---

**C1orf186 Antibody (C-term) - Product Information**

Application	WB, IHC-P,E
Primary Accession	<a href="#">Q6ZWK4</a>
Other Accession	<a href="#">NP_001007545.1</a>
Reactivity	Human
Host	Rabbit
Clonality	Polyclonal
Isotype	Rabbit IgG
Calculated MW	19405
Antigen Region	121-150

**C1orf186 Antibody (C-term) - Additional Information****Gene ID** 440712**Other Names**

Uncharacterized protein C1orf186, C1orf186

**Target/Specificity**

This C1orf186 antibody is generated from rabbits immunized with a KLH conjugated synthetic peptide between 121-150 amino acids from the C-terminal region of human C1orf186.

**Dilution**

WB~~1:1000

IHC-P~~1:50~100

**Format**

Purified polyclonal antibody supplied in PBS with 0.09% (W/V) sodium azide. This antibody is purified through a protein A column, followed by peptide affinity purification.

**Storage**

Maintain refrigerated at 2-8°C for up to 2 weeks. For long term storage store at -20°C in small aliquots to prevent freeze-thaw cycles.

**Precautions**

C1orf186 Antibody (C-term) is for research use only and not for use in diagnostic or therapeutic procedures.

**C1orf186 Antibody (C-term) - Protein Information****Name** RHEX ([HGNC:25341](#))**Function** Acts as a signaling transduction factor of the EPO-EPOR signaling pathway promoting

erythroid cell differentiation (PubMed:[25092874](#)).

#### Cellular Location

Cell membrane; Single-pass membrane protein

#### Tissue Location

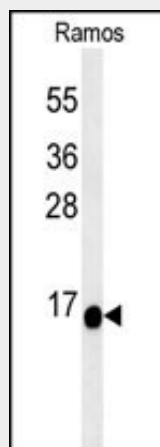
Expressed in the proerythroblasts (at protein level) (PubMed:25092874). Expressed strongly in the kidney (PubMed:25092874). Expressed weakly in the pancreas, liver and lung (PubMed:25092874). Expressed strongly in erythroid progenitor cells (EPCs) (PubMed:25092874). Expressed weakly in T-cells and neutrophils (PubMed:25092874).

### C1orf186 Antibody (C-term) - Protocols

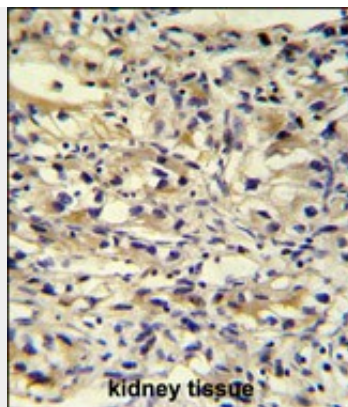
Provided below are standard protocols that you may find useful for product applications.

- [Western Blot](#)
- [Blocking Peptides](#)
- [Dot Blot](#)
- [Immunohistochemistry](#)
- [Immunofluorescence](#)
- [Immunoprecipitation](#)
- [Flow Cytometry](#)
- [Cell Culture](#)

### C1orf186 Antibody (C-term) - Images



C1orf186 Antibody (C-term) (Cat. #AP5963b) western blot analysis in Ramos cell line lysates (35ug/lane). This demonstrates the C1orf186 antibody detected the C1orf186 protein (arrow).



C1orf186 antibody (C-term) (Cat. #AP5963b) immunohistochemistry analysis in formalin fixed and paraffin embedded human kidney tissue followed by peroxidase conjugation of the secondary antibody and DAB staining. This data demonstrates the use of the C1orf186 antibody (C-term) for immunohistochemistry. Clinical relevance has not been evaluated.