

Integrin α 3 Polyclonal Antibody
Catalog # AP73887**Specification**

Integrin α 3 Polyclonal Antibody - Product Information

Application	WB, IHC-P
Primary Accession	P26006
Reactivity	Human, Mouse, Rat
Host	Rabbit
Clonality	Polyclonal

Integrin α 3 Polyclonal Antibody - Additional Information**Gene ID** 3675**Other Names**

ITGA3; MSK18; Integrin alpha-3; CD49 antigen-like family member C; FRP-2; Galactoprotein B3; GAPB3; VLA-3 subunit alpha; CD49c

Dilution

WB~~Western Blot: 1/500 - 1/2000. IHC-p: 1:100-1:300. ELISA: 1/10000. Not yet tested in other applications.

IHC-P~~N/A

Format

Liquid in PBS containing 50% glycerol, 0.5% BSA and 0.09% (W/V) sodium azide.

Storage Conditions

-20°C

Integrin α 3 Polyclonal Antibody - Protein Information**Name** ITGA3**Synonyms** MSK18**Function**

Integrin alpha-3/beta-1 is a receptor for fibronectin, laminin, collagen, epiligrin, thrombospondin and CSPG4. Integrin alpha- 3/beta-1 provides a docking site for FAP (seprase) at invadopodia plasma membranes in a collagen-dependent manner and hence may participate in the adhesion, formation of invadopodia and matrix degradation processes, promoting cell invasion. Alpha-3/beta-1 may mediate with LGALS3 the stimulation by CSPG4 of endothelial cells migration.

Cellular Location

Cell membrane; Single-pass type I membrane protein. Cell membrane; Lipid- anchor. Cell projection, invadopodium membrane; Single-pass type I membrane protein. Cell projection, filopodium membrane; Single-pass type I membrane protein. Note=Enriched preferentially at invadopodia, cell membrane protrusions that correspond to sites of cell invasion, in a

collagen-dependent manner.

Tissue Location

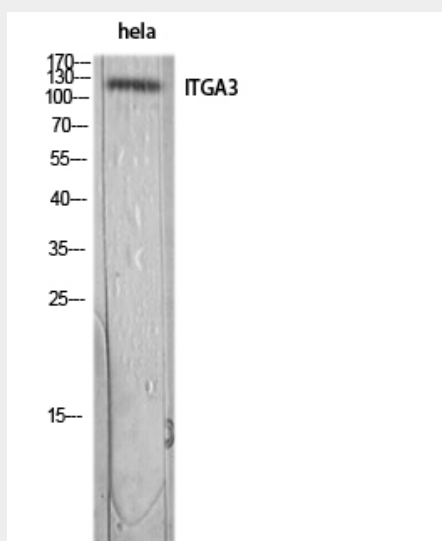
Isoform 1 is widely expressed. Isoform 2 is expressed in brain and heart. In brain, both isoforms are exclusively expressed on vascular smooth muscle cells, whereas in heart isoform 1 is strongly expressed on vascular smooth muscle cells, isoform 2 is detected only on endothelial vein cells.

Integrin $\alpha 3$ Polyclonal Antibody - Protocols

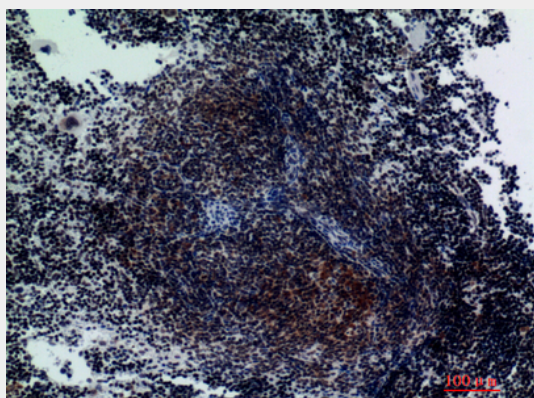
Provided below are standard protocols that you may find useful for product applications.

- [Western Blot](#)
- [Blocking Peptides](#)
- [Dot Blot](#)
- [Immunohistochemistry](#)
- [Immunofluorescence](#)
- [Immunoprecipitation](#)
- [Flow Cytometry](#)
- [Cell Culture](#)

Integrin $\alpha 3$ Polyclonal Antibody - Images



Western blot analysis of HeLa lysis using ITGA3 antibody. Antibody was diluted at 1:500. Secondary antibody was diluted at 1:20000



Immunohistochemical analysis of paraffin-embedded mouse-spleen, antibody was diluted at 1:200

Integrin α 3 Polyclonal Antibody - Background

Integrin alpha-3/beta-1 is a receptor for fibronectin, laminin, collagen, epiligrin, thrombospondin and CSPG4. Integrin alpha-3/beta-1 provides a docking site for FAP (seprase) at invadopodia plasma membranes in a collagen-dependent manner and hence may participate in the adhesion, formation of invadopodia and matrix degradation processes, promoting cell invasion. Alpha- 3/beta-1 may mediate with LGALS3 the stimulation by CSPG4 of endothelial cells migration.