

C11orf30 Antibody (N-term)
Affinity Purified Rabbit Polyclonal Antibody (Pab)
Catalog # AP9475a**Specification**

C11orf30 Antibody (N-term) - Product Information

| | |
|-------------------|---|
| Application | WB,E |
| Primary Accession | Q7Z589 |
| Other Accession | Q8BMB0 , Q7ZUV7 |
| Reactivity | Human |
| Predicted | Zebrafish, Mouse |
| Host | Rabbit |
| Clonality | Polyclonal |
| Isotype | Rabbit IgG |
| Antigen Region | 46-75 |

C11orf30 Antibody (N-term) - Additional Information**Gene ID** 56946**Other Names**

Protein EMSY, EMSY, C11orf30

Target/Specificity

This C11orf30 antibody is generated from rabbits immunized with a KLH conjugated synthetic peptide between 46-75 amino acids from the N-terminal region of human C11orf30.

Dilution

WB~~1:1000

Format

Purified polyclonal antibody supplied in PBS with 0.09% (W/V) sodium azide. This antibody is purified through a protein A column, followed by peptide affinity purification.

Storage

Maintain refrigerated at 2-8°C for up to 2 weeks. For long term storage store at -20°C in small aliquots to prevent freeze-thaw cycles.

Precautions

C11orf30 Antibody (N-term) is for research use only and not for use in diagnostic or therapeutic procedures.

C11orf30 Antibody (N-term) - Protein Information**Name** EMSY ([HGNC:18071](#))**Synonyms** C11orf30

Function Regulator which is able to repress transcription, possibly via its interaction with a multiprotein chromatin remodeling complex that modifies the chromatin (PubMed:[14651845](#)). Its interaction with BRCA2 suggests that it may play a central role in the DNA repair function of BRCA2 (PubMed:[14651845](#)). Mediates ligand-dependent transcriptional activation by nuclear hormone receptors (PubMed:[19131338](#)).

Cellular Location

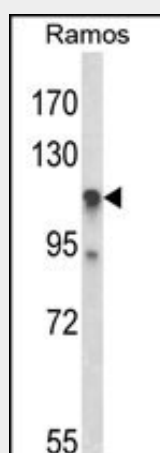
Nucleus. Note=Localizes to DNA damage markers in irradiated cells, suggesting that it participates in DNA repair process

C11orf30 Antibody (N-term) - Protocols

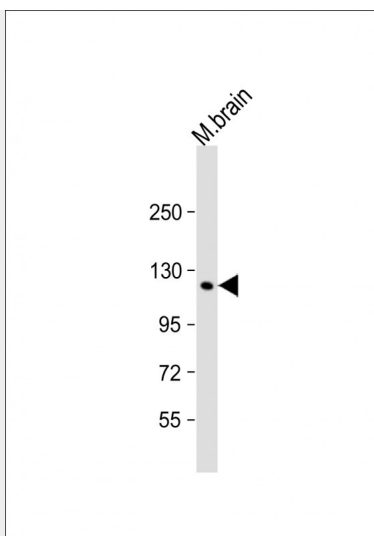
Provided below are standard protocols that you may find useful for product applications.

- [Western Blot](#)
- [Blocking Peptides](#)
- [Dot Blot](#)
- [Immunohistochemistry](#)
- [Immunofluorescence](#)
- [Immunoprecipitation](#)
- [Flow Cytometry](#)
- [Cell Culture](#)

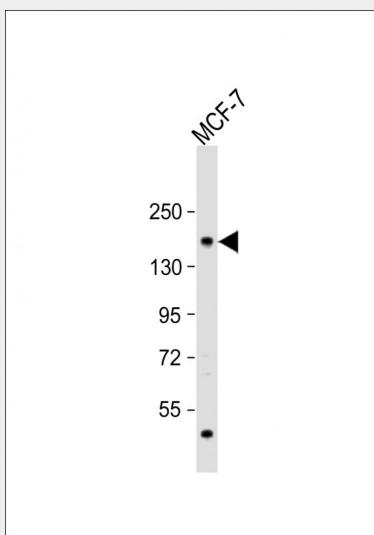
C11orf30 Antibody (N-term) - Images



Western blot analysis of C11orf30 Antibody (N-term) (Cat. #AP9475a) in Ramos cell line lysates (35ug/lane). C11orf30 (arrow) was detected using the purified Pab.



Anti-C11orf30 Antibody (N-term) at 1:2000 dilution + mouse brain lysate Lysates/proteins at 20 µg per lane. Secondary Goat Anti-Rabbit IgG, (H+L), Peroxidase conjugated at 1/10000 dilution. Predicted band size : 141 kDa Blocking/Dilution buffer: 5% NFDM/TBST.



Anti-C11orf30 Antibody (N-term) at 1:1000 dilution + MCF-7 whole cell lysate Lysates/proteins at 20 µg per lane. Secondary Goat Anti-Rabbit IgG, (H+L), Peroxidase conjugated at 1/10000 dilution. Predicted band size : 141 kDa Blocking/Dilution buffer: 5% NFDM/TBST.

C11orf30 Antibody (N-term) - Background

Regulator which is able to repress transcription, possibly via its interaction with a multiprotein chromatin remodeling complex that modifies the chromatin. Its interaction with BRCA2 suggests that it may play a central role in the DNA repair function of BRCA2.

C11orf30 Antibody (N-term) - References

- ?Esparza-Gordillo, J., et al. Nat. Genet. 41(5):596-601(2009)
- ?Garapaty, S., et al. J. Biol. Chem. 284(12):7542-7552(2009)
- ?Mavaddat, N., et al. Cancer Epidemiol. Biomarkers Prev. 18(1):255-259(2009)
- ?Vega, A., et al. Gynecol. Oncol. 112(1):210-214(2009)