

**DANRE hoxa1a Antibody (Center)**  
**Affinity Purified Rabbit Polyclonal Antibody (Pab)**  
**Catalog # Azb10012a**

**Specification**

---

**DANRE hoxa1a Antibody (Center) - Product Information**

Application	WB,E
Primary Accession	<a href="#">O98S11</a>
Other Accession	<a href="#">Q08821</a>
Reactivity	Zebrafish
Predicted	Xenopus
Host	Rabbit
Clonality	Polyclonal
Isotype	Rabbit IgG
Calculated MW	35737
Antigen Region	192-219

**DANRE hoxa1a Antibody (Center) - Additional Information**

**Gene ID** 58051

**Other Names**

Homeobox protein Hox-A1a, Hox-A1, hoxa1a, hoxa1

**Target/Specificity**

This DANRE hoxa1a antibody is generated from rabbits immunized with a KLH conjugated synthetic peptide between 192-219 amino acids from the Central region of DANRE hoxa1a.

**Dilution**

WB~~1:1000

**Format**

Purified polyclonal antibody supplied in PBS with 0.09% (W/V) sodium azide. This antibody is purified through a protein A column, followed by peptide affinity purification.

**Storage**

Maintain refrigerated at 2-8°C for up to 2 weeks. For long term storage store at -20°C in small aliquots to prevent freeze-thaw cycles.

**Precautions**

DANRE hoxa1a Antibody (Center) is for research use only and not for use in diagnostic or therapeutic procedures.

**DANRE hoxa1a Antibody (Center) - Protein Information**

**Name** hoxa1a

**Synonyms** hoxa1

**Function** Sequence-specific transcription factor. Part of a developmental regulatory system that provides cells with specific positional identities on the anterior-posterior axis (By similarity).

**Cellular Location**

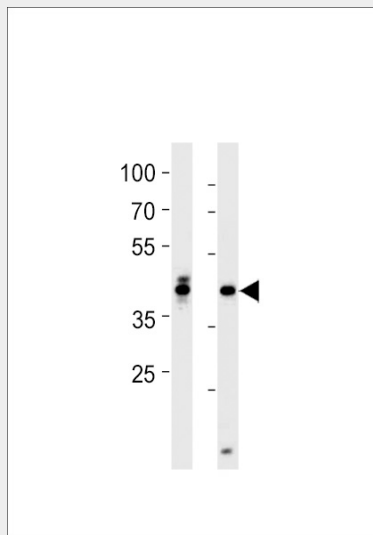
Nucleus {ECO:0000255|PROSITE-ProRule:PRU00108}.

**DANRE hoxa1a Antibody (Center) - Protocols**

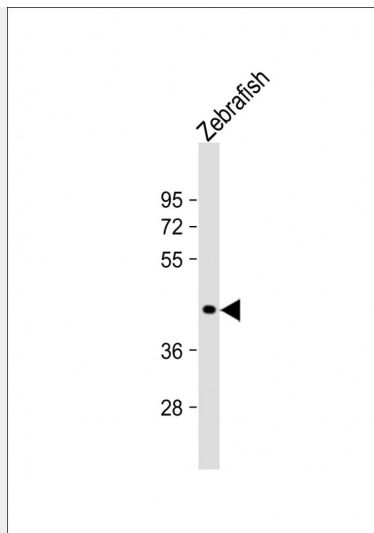
Provided below are standard protocols that you may find useful for product applications.

- [Western Blot](#)
- [Blocking Peptides](#)
- [Dot Blot](#)
- [Immunohistochemistry](#)
- [Immunofluorescence](#)
- [Immunoprecipitation](#)
- [Flow Cytometry](#)
- [Cell Culture](#)

**DANRE hoxa1a Antibody (Center) - Images**



DANRE hoxa1a Antibody (Center) (Cat. #Azb10012a) western blot analysis in zebra fish brain and heart tissue lysates (35ug/lane). This demonstrates the DANRE hoxa1a antibody detected the DANRE hoxa1a protein (arrow).



Anti-DANRE *hoxa1a* Antibody (Center) at 1:1000 dilution + Zebrafish lysate Lysates/proteins at 20  $\mu$ g per lane. Secondary Goat Anti-Rabbit IgG, (H+L), Peroxidase conjugated at 1/10000 dilution. Predicted band size : 36 kDa Blocking/Dilution buffer: 5% NFD/MTBST.

#### **DANRE *hoxa1a* Antibody (Center) - Background**

Sequence-specific transcription factor which is part of a developmental regulatory system that provides cells with specific positional identities on the anterior-posterior axis (By similarity).

#### **DANRE *hoxa1a* Antibody (Center) - References**

McClintock J.M., et al. *Development* 128:2471-2484(2001).  
Amores A., et al. *Science* 282:1711-1714(1998).  
Corredor-Adamez M., et al. *Evol. Dev.* 7:362-375(2005).