

**DANRE neurog1 Antibody (Center)**  
**Affinity Purified Rabbit Polyclonal Antibody (Pab)**  
**Catalog # Azb10027b**

**Specification**

---

**DANRE neurog1 Antibody (Center) - Product Information**

Application	WB,E
Primary Accession	<a href="#">O42606</a>
Reactivity	Zebrafish
Host	Rabbit
Clonality	Polyclonal
Isotype	Rabbit IgG
Calculated MW	22911
Antigen Region	112-138

**DANRE neurog1 Antibody (Center) - Additional Information**

**Gene ID** 30239

**Other Names**

Neurogenin-1, NGN-1, Neurogenic differentiation factor 3, NeuroD3, Neurogenin-related protein 1, neurog1, neurod3, ngn1, ngr1

**Target/Specificity**

This DANRE neurog1 antibody is generated from rabbits immunized with a KLH conjugated synthetic peptide between 112-138 amino acids from the Central region of DANRE neurog1.

**Dilution**

WB~~~1:1000

E~~~Use at an assay dependent concentration.

**Format**

Purified polyclonal antibody supplied in PBS with 0.09% (W/V) sodium azide. This antibody is purified through a protein A column, followed by peptide affinity purification.

**Storage**

Maintain refrigerated at 2-8°C for up to 2 weeks. For long term storage store at -20°C in small aliquots to prevent freeze-thaw cycles.

**Precautions**

DANRE neurog1 Antibody (Center) is for research use only and not for use in diagnostic or therapeutic procedures.

**DANRE neurog1 Antibody (Center) - Protein Information**

**Name** neurog1

**Synonyms** neurod3, ngn1, ngr1

**Function** Transcriptional regulator. Activates transcription by binding to the E box-containing promoter (By similarity). Mediates neuronal differentiation. Required for the development of Rohon-Beard spinal sensory neurons and dorsal root ganglion neurons, but not for primary motoneurons or autonomic neurons. Required for development of all cranial ganglia but not associated glial cells. Regulates epiphyseal neurogenesis, acting partially redundantly with *ascl1a* and downstream of *flh*. Required for the development of basal forebrain dopaminergic neurons; involved in the specification of dopaminergic progenitor cells. May be involved in maintaining rhombomere boundaries in the hindbrain.

#### Cellular Location

Nucleus.

#### Tissue Location

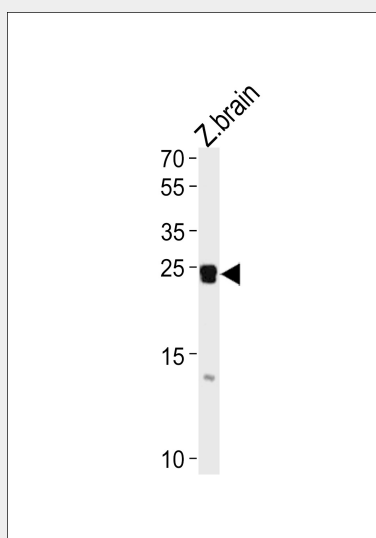
Embryonic nervous system. Expressed transiently in neurogenic placodes prior to delamination and formation of cranial ganglia. Expressed early (6-somite stage) in Rohon-Beard spinal sensory neurons and later in neural crest-derived dorsal root ganglion neurons. At 24 hours post-fertilization (hpf), expressed in specific regions of the brain and spinal cord. In hindbrain, expressed in presumptive neuroblasts adjacent to the rhombomere boundaries. In basal forebrain, expressed in dopaminergic progenitor cells.

### DANRE neurog1 Antibody (Center) - Protocols

Provided below are standard protocols that you may find useful for product applications.

- [Western Blot](#)
- [Blocking Peptides](#)
- [Dot Blot](#)
- [Immunohistochemistry](#)
- [Immunofluorescence](#)
- [Immunoprecipitation](#)
- [Flow Cytometry](#)
- [Cell Culture](#)

### DANRE neurog1 Antibody (Center) - Images



DANRE neurog1 Antibody (Center) (Cat. #Azb10027b) western blot analysis in zebra fish brain tissue lysates (35ug/lane). This demonstrates the DANRE neurog1 antibody detected the DANRE

neurog1 protein (arrow).

#### **DANRE neurog1 Antibody (Center) - Background**

Transcriptional regulator. Activates transcription by binding to the E box-containing promoter (By similarity). Mediates neuronal differentiation. Required for the development of Rohon-Beard spinal sensory neurons and dorsal root ganglion neurons, but not for primary motoneurons or autonomic neurons. Required for development of all cranial ganglia but not associated glial cells. Regulates epiphyseal neurogenesis, acting partially redundantly with *ascl1a* and downstream of *flh*. Required for the development of basal forebrain dopaminergic neurons; involved in the specification of dopaminergic progenitor cells. May be involved in maintaining rhombomere boundaries in the hindbrain.

#### **DANRE neurog1 Antibody (Center) - References**

Blader P., et al. Development 124:4557-4569(1997).  
Kim C.-H., et al. Neurosci. Lett. 239:113-116(1997).  
Korzh V., et al. Dev. Dyn. 213:92-104(1998).  
Thisse B., et al. Submitted (MAR-1997) to the EMBL/GenBank/DDBJ databases.  
Cornell R.A., et al. Development 129:2639-2648(2002).