

**DANRE selm Antibody (C-term)**  
**Affinity Purified Rabbit Polyclonal Antibody (Pab)**  
**Catalog # Azb10029b**

**Specification**

---

**DANRE selm Antibody (C-term) - Product Information**

Application	WB,E
Primary Accession	<a href="#">Q802G7</a>
Reactivity	Zebrafish
Host	Rabbit
Clonality	Polyclonal
Isotype	Rabbit IgG
Calculated MW	17172
Antigen Region	96-119

**DANRE selm Antibody (C-term) - Additional Information**

**Other Names**

Selenoprotein M, SePM, SelM, selm, sepm

**Target/Specificity**

This DANRE selm antibody is generated from rabbits immunized with a KLH conjugated synthetic peptide between 96-119 amino acids from the C-terminal region of DANRE selm.

**Dilution**

WB~~1:1000

E~~Use at an assay dependent concentration.

**Format**

Purified polyclonal antibody supplied in PBS with 0.09% (W/V) sodium azide. This antibody is purified through a protein A column, followed by peptide affinity purification.

**Storage**

Maintain refrigerated at 2-8°C for up to 2 weeks. For long term storage store at -20°C in small aliquots to prevent freeze-thaw cycles.

**Precautions**

DANRE selm Antibody (C-term) is for research use only and not for use in diagnostic or therapeutic procedures.

**DANRE selm Antibody (C-term) - Protein Information**

**Name** Selenom {ECO:0000250|UniProtKB:Q8WWX9}

**Function** May function as a thiol-disulfide oxidoreductase that participates in disulfide bond formation.

**Tissue Location**

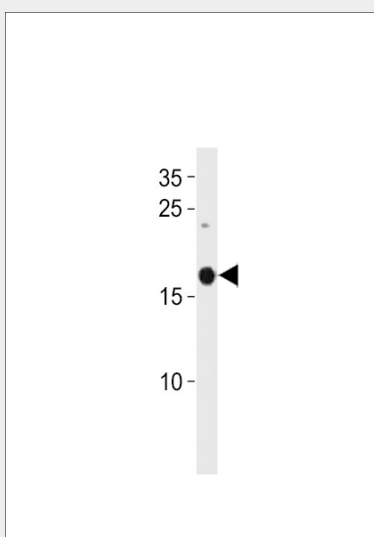
During early embryogenesis, abundantly expressed within the notochord and anterior somites. At later stages, accumulates within the axial fin fold, dorsal spinal cord neurons, then in lateral line neuromasts.

### **DANRE selm Antibody (C-term) - Protocols**

Provided below are standard protocols that you may find useful for product applications.

- [Western Blot](#)
- [Blocking Peptides](#)
- [Dot Blot](#)
- [Immunohistochemistry](#)
- [Immunofluorescence](#)
- [Immunoprecipitation](#)
- [Flow Cytometry](#)
- [Cell Culture](#)

### **DANRE selm Antibody (C-term) - Images**



DANRE selm Antibody (C-term) (Cat. #AzB10029b) western blot analysis in zebra fish heart tissue lysates (35ug/lane). This demonstrates the DANRE selm antibody detected the DANRE selm protein (arrow).

### **DANRE selm Antibody (C-term) - Background**

May function as a thiol-disulfide oxidoreductase that participates in disulfide bond formation (By similarity).

### **DANRE selm Antibody (C-term) - References**

Thisse C., et al. Gene Expr. Patterns 3:525-532(2003).