

**DANRE dusp22a Antibody (C-term)**  
**Affinity Purified Rabbit Polyclonal Antibody (Pab)**  
**Catalog # Azb10036a**

**Specification**

---

**DANRE dusp22a Antibody (C-term) - Product Information**

Application	WB,E
Primary Accession	<a href="#">O1LWL2</a>
Reactivity	Zebrafish
Host	Rabbit
Clonality	Polyclonal
Isotype	Rabbit IgG
Calculated MW	23386
Antigen Region	172-195

**DANRE dusp22a Antibody (C-term) - Additional Information**

**Gene ID** 436787

**Other Names**

Dual specificity protein phosphatase 22-A, dusp22a {ECO:0000312|ZFIN:ZDB-GENE-040718-219}

**Target/Specificity**

This DANRE dusp22a antibody is generated from rabbits immunized with a KLH conjugated synthetic peptide between 172-195 amino acids from the C-terminal region of DANRE dusp22a.

**Dilution**

WB~~1:1000

E~~Use at an assay dependent concentration.

**Format**

Purified polyclonal antibody supplied in PBS with 0.09% (W/V) sodium azide. This antibody is purified through a protein A column, followed by peptide affinity purification.

**Storage**

Maintain refrigerated at 2-8°C for up to 2 weeks. For long term storage store at -20°C in small aliquots to prevent freeze-thaw cycles.

**Precautions**

DANRE dusp22a Antibody (C-term) is for research use only and not for use in diagnostic or therapeutic procedures.

**DANRE dusp22a Antibody (C-term) - Protein Information**

**Name** dusp22a {ECO:0000312|ZFIN:ZDB-GENE-040718-219}

**Function** Activates the Jnk signaling pathway. Dephosphorylates and deactivates p38 and stress-activated protein kinase/c-Jun N-terminal kinase (SAPK/JNK) (By similarity).

### Cellular Location

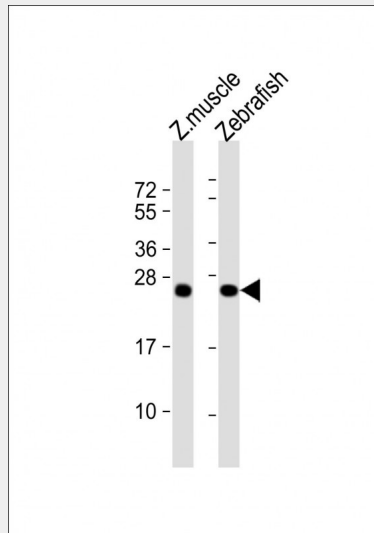
Cytoplasm {ECO:0000250|UniProtKB:Q99N11}. Nucleus {ECO:0000250|UniProtKB:Q99N11}

### DANRE dusp22a Antibody (C-term) - Protocols

Provided below are standard protocols that you may find useful for product applications.

- [Western Blot](#)
- [Blocking Peptides](#)
- [Dot Blot](#)
- [Immunohistochemistry](#)
- [Immunofluorescence](#)
- [Immunoprecipitation](#)
- [Flow Cytometry](#)
- [Cell Culture](#)

### DANRE dusp22a Antibody (C-term) - Images



All lanes : Anti-(DANRE) dusp22a Antibody (C-term) at 1:1000 dilution Lane 1: zebrafish muscle lysate Lane 2: Zebrafish lysate Lysates/proteins at 20 µg per lane. Secondary Goat Anti-Rabbit IgG, (H+L), Peroxidase conjugated at 1/10000 dilution. Predicted band size : 23 kDa Blocking/Dilution buffer: 5% NFDM/TBST.

### DANRE dusp22a Antibody (C-term) - Background

Activates the Jnk signaling pathway. Dephosphorylates and deactivates p38 and stress-activated protein kinase/c-Jun N-terminal kinase (SAPK/JNK) (By similarity).