

DANRES1pr1 Antibody (C-term)
Affinity Purified Rabbit Polyclonal Antibody (Pab)
Catalog # Azb10039a

Specification

DANRES1pr1 Antibody (C-term) - Product Information

Application	WB,E
Primary Accession	Q9DDK4
Reactivity	Zebrafish
Host	Rabbit
Clonality	Polyclonal
Isotype	Rabbit IgG
Calculated MW	40601
Antigen Region	311-335

DANRES1pr1 Antibody (C-term) - Additional Information

Gene ID 64617

Other Names

Sphingosine 1-phosphate receptor 1, S1P receptor 1, S1P1, Sphingosine 1-phosphate receptor Edg-1, S1P receptor Edg-1, s1pr1, edg1

Target/Specificity

This DANRES1pr1 antibody is generated from rabbits immunized with a KLH conjugated synthetic peptide between 311-335 amino acids from the C-terminal region of DANRES1pr1.

Dilution

WB~~1:1000

E~~Use at an assay dependent concentration.

Format

Purified polyclonal antibody supplied in PBS with 0.09% (W/V) sodium azide. This antibody is purified through a protein A column, followed by peptide affinity purification.

Storage

Maintain refrigerated at 2-8°C for up to 2 weeks. For long term storage store at -20°C in small aliquots to prevent freeze-thaw cycles.

Precautions

DANRES1pr1 Antibody (C-term) is for research use only and not for use in diagnostic or therapeutic procedures.

DANRES1pr1 Antibody (C-term) - Protein Information

Name s1pr1

Synonyms edg1

Function G-protein coupled receptor for the bioactive lysosphingolipid sphingosine 1-phosphate (S1P) that seems to be coupled to the G(i) subclass of heteromeric G proteins. Signaling leads to the activation of RAC1, SRC, PTK2/FAK1 and MAP kinases. Plays an important role in cell migration, probably via its role in the reorganization of the actin cytoskeleton and the formation of lamellipodia in response to stimuli that increase the activity of the sphingosine kinase SPHK1. Required for normal chemotaxis toward sphingosine 1-phosphate.

Cellular Location

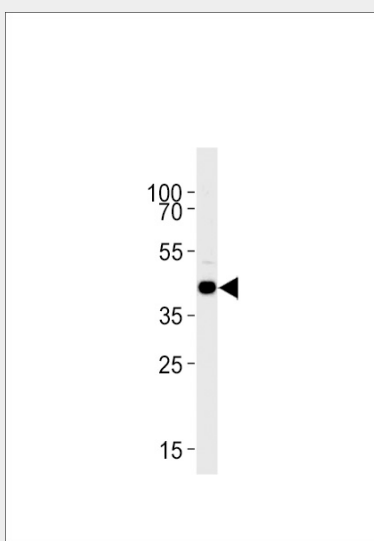
Cell membrane; Multi-pass membrane protein.

DANREs1pr1 Antibody (C-term) - Protocols

Provided below are standard protocols that you may find useful for product applications.

- [Western Blot](#)
- [Blocking Peptides](#)
- [Dot Blot](#)
- [Immunohistochemistry](#)
- [Immunofluorescence](#)
- [Immunoprecipitation](#)
- [Flow Cytometry](#)
- [Cell Culture](#)

DANREs1pr1 Antibody (C-term) - Images



DANREs1pr1 Antibody (C-term) (Cat. #Azb10039a) western blot analysis in zebra fish brain tissue lysates (35ug/lane). This demonstrates the DANREs1pr1 antibody detected the DANREs1pr1 protein (arrow).

DANREs1pr1 Antibody (C-term) - Background

Receptor for the lysosphingolipid sphingosine 1-phosphate (S1P). S1P is a bioactive lysophospholipid that elicits diverse physiological effect on most types of cells and tissues. This inducible epithelial cell G-protein-coupled receptor may be involved in the processes that regulate the differentiation of endothelial cells. Seems to be coupled to the G(i) subclass of heteromeric G proteins.

DANREs1pr1 Antibody (C-term) - References

Im D.-S., et al. Biochem. Biophys. Res. Commun. 279:139-143(2000).