

**DANRE sdhb Antibody(Center)**  
**Affinity Purified Rabbit Polyclonal Antibody (Pab)**  
**Catalog # Azb10040a**

**Specification**

---

**DANRE sdhb Antibody(Center) - Product Information**

Application	WB,E
Primary Accession	<a href="#">A5PL98</a>
Other Accession	<a href="#">P21913</a> , <a href="#">Q007T0</a> , <a href="#">Q9COA3</a> , <a href="#">P21912</a> , <a href="#">Q9YHT2</a> , <a href="#">Q3T189</a>
Reactivity	Human, Mouse, Rat, Zebrafish
Predicted	Bovine, Chicken, Pig
Host	Rabbit
Clonality	Polyclonal
Isotype	Rabbit IgG
Calculated MW	31740
Antigen Region	137-162

**DANRE sdhb Antibody(Center) - Additional Information**

**Gene ID** 562149

**Other Names**

Succinate dehydrogenase [ubiquinone] iron-sulfur subunit, mitochondrial, Iron-sulfur subunit of complex II, Ip, sdhb

**Target/Specificity**

This DANRE sdhb antibody is generated from rabbits immunized with a KLH conjugated synthetic peptide between 137-162 amino acids from the Central region of DANRE sdhb.

**Dilution**

WB~~1:1000

E~~Use at an assay dependent concentration.

**Format**

Purified polyclonal antibody supplied in PBS with 0.09% (W/V) sodium azide. This antibody is purified through a protein A column, followed by peptide affinity purification.

**Storage**

Maintain refrigerated at 2-8°C for up to 2 weeks. For long term storage store at -20°C in small aliquots to prevent freeze-thaw cycles.

**Precautions**

DANRE sdhb Antibody(Center) is for research use only and not for use in diagnostic or therapeutic procedures.

**DANRE sdhb Antibody(Center) - Protein Information**

**Name** sdhb

**Function** Iron-sulfur protein (IP) subunit of the succinate dehydrogenase complex (mitochondrial respiratory chain complex II), responsible for transferring electrons from succinate to ubiquinone (coenzyme Q) (By similarity). SDH also oxidizes malate to the non- canonical enol form of oxaloacetate, enol-oxaloacetate. Enol- oxaloacetate, which is a potent inhibitor of the succinate dehydrogenase activity, is further isomerized into keto-oxaloacetate (By similarity).

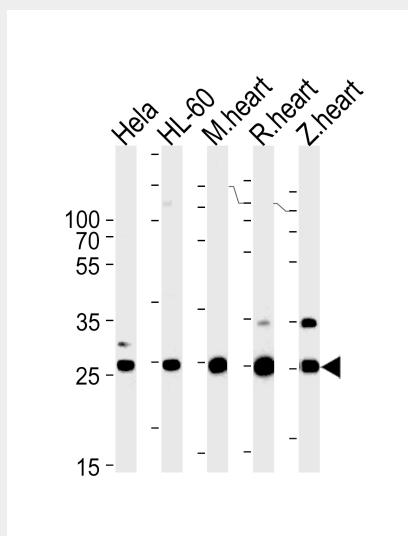
**Cellular Location**

Mitochondrion inner membrane {ECO:0000250|UniProtKB:Q9YHT2}; Peripheral membrane protein {ECO:0000250|UniProtKB:Q9YHT2}; Matrix side {ECO:0000250|UniProtKB:Q9YHT2}

**DANRE sdhb Antibody(Center) - Protocols**

Provided below are standard protocols that you may find useful for product applications.

- [Western Blot](#)
- [Blocking Peptides](#)
- [Dot Blot](#)
- [Immunohistochemistry](#)
- [Immunofluorescence](#)
- [Immunoprecipitation](#)
- [Flow Cytometry](#)
- [Cell Culture](#)

**DANRE sdhb Antibody(Center) - Images**

DANRE sdhb Antibody (Cat. #Azbl0040a) western blot analysis in HeLa,HL-60 cell line,mouse heart,rat heart,zebra fish heart tissue lysates (35ug/lane).This demonstrates the DANRE sdhb antibody detected the DANRE sdhb protein (arrow).

**DANRE sdhb Antibody(Center) - Background**

Iron-sulfur protein (IP) subunit of succinate dehydrogenase (SDH) that is involved in complex II of the mitochondrial electron transport chain and is responsible for transferring electrons from succinate to ubiquinone (coenzyme Q) (By similarity).