

(DANRE) irf2bp2b Antibody (N-term)
Purified Rabbit Polyclonal Antibody (Pab)
Catalog # Azb18697a

Specification

(DANRE) irf2bp2b Antibody (N-term) - Product Information

Application	WB,E
Primary Accession	Q7T2G1
Reactivity	Zebrafish
Host	Rabbit
Clonality	Polyclonal
Isotype	Rabbit IgG
Antigen Region	73-107

(DANRE) irf2bp2b Antibody (N-term) - Additional Information

Gene ID 406614

Other Names

Interferon regulatory factor 2-binding protein 2-B, IRF-2-binding protein 2-B, IRF-2BP2-B, irf2bp2b, irf2bp2

Target/Specificity

This (DANRE) irf2bp2b antibody is generated from a rabbit immunized with a KLH conjugated synthetic peptide between 73-107 amino acids of DANRE irf2bp2b.

Dilution

WB~~1:1000

Format

Purified polyclonal antibody supplied in PBS with 0.09% (W/V) sodium azide. This antibody is purified through a protein A column, followed by peptide affinity purification.

Storage

Maintain refrigerated at 2-8°C for up to 2 weeks. For long term storage store at -20°C in small aliquots to prevent freeze-thaw cycles.

Precautions

(DANRE) irf2bp2b Antibody (N-term) is for research use only and not for use in diagnostic or therapeutic procedures.

(DANRE) irf2bp2b Antibody (N-term) - Protein Information

Name irf2bp2b

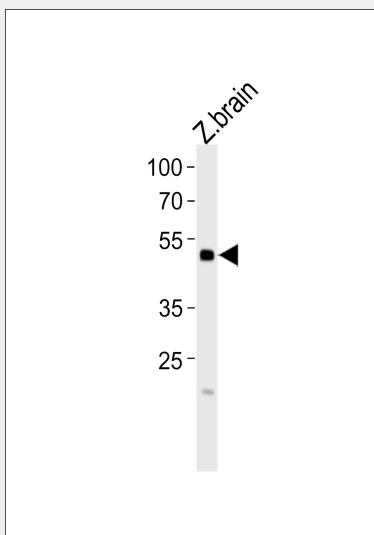
Synonyms irf2bp2

Function Acts as a transcriptional repressor.

Cellular Location
Nucleus.**(DANRE) irf2bp2b Antibody (N-term) - Protocols**

Provided below are standard protocols that you may find useful for product applications.

- [Western Blot](#)
- [Blocking Peptides](#)
- [Dot Blot](#)
- [Immunohistochemistry](#)
- [Immunofluorescence](#)
- [Immunoprecipitation](#)
- [Flow Cytometry](#)
- [Cell Culture](#)

(DANRE) irf2bp2b Antibody (N-term) - Images

Western blot analysis of lysate from zebra fish brain tissue lysate, using (DANRE) irf2bp2b Antibody (N-term)(Cat. #Azb18697a). Azb18697a was diluted at 1:1000. A goat anti-rabbit IgG H&L(HRP) at 1:5000 dilution was used as the secondary antibody. Lysate at 35ug.

(DANRE) irf2bp2b Antibody (N-term) - Background

Acts as a transcriptional repressor (By similarity).